

# INSTALLATION INSTRUCTIONS

## Emergency Testing Sheet

### Testing (Emergency Versions)

The emergency light must be tested and inspected regularly in accordance with local codes of practice.

NOTE: For safety reasons tests should be carried out preceeding time of low risk, to allow for battery recharge.

The minimum recommended test schedule is as follows:

Commissioning - After installation, allow 36 hours to ensure full battery charge, and then interrupt the supply; check after 3 hours that the lamp is still illuminated.

1. Daily - Check that the charge indicator LED is working.
2. Monthly - Interrupt the power supply for a period sufficient to ensure each lamp is illuminated. At the end of the test, restore the supply and check the indicator is illuminated.
3. Annually - Interrupt the supply as in 2, but for the full rated duration. Ensure the lamp is illuminated at the end of the rated duration. Restore the supply and check the indicator is illuminated.
4. Record the date and result of each test, attending to any maintenance required in the event of a test failure.

Luminaire Location .....

Date Installed .....

Date Commissioned .....

Month	Test	Year 1			Year 2			Year 3		
		Signed	Result / Action	Date	Signed	Result / Action	Date	Signed	Result / Action	Date
1	Functional									
2	Functional									
3	Functional									
4	Functional									
5	Functional									
6	Functional									
7	Functional									
8	Functional									
9	Functional									
10	Functional									
11	Functional									
12	Full Duration									

## 502B Recessed Blade Style Exit Sign

Product Codes: **LFACLED502B, EB, EB-D, EB-U**

### Safety Warning



- The installation should be carried out by a qualified electrician in compliance with the current edition of the IEE Wiring Regulations.
- Prior to installation, carry out the necessary risk assessment considering the people who could be at risk, the level of risk and the precautions required to control the risk
- Ensure that the circuit supply is isolated either by the circuit supply fuse being removed or the applicable circuit breaker being turned off before installation or any maintenance.
- Check the total load on the circuit ensuring the luminaire does not exceed the rating of the circuit cable, fuse or circuit breaker.
- Long-term use and voltage fluctuations can reduce the life span of the fitting.
- If the fitting incorporates control gear, ensure careful sizing to avoid instances of nuisance tripping of the protective device used in the installation.
- Follow the provided installation instructions, using the fixings supplied or recommended.
- Keep out of reach of children.

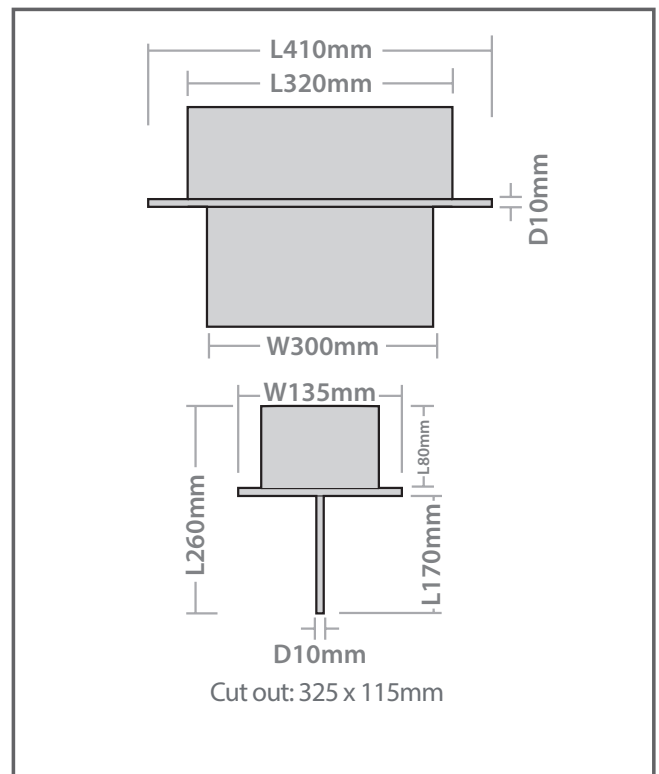


### Specification

#### Box Contents -

1 x 3.3W Exit Sign with Blade Arrow Up  
1 x Self Adhesive Legend Kit  
1 x Ni-Cd 4.8V 600mAh Battery

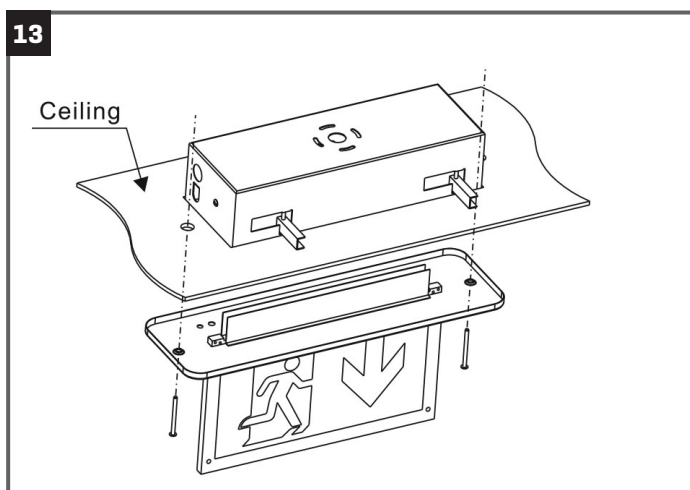
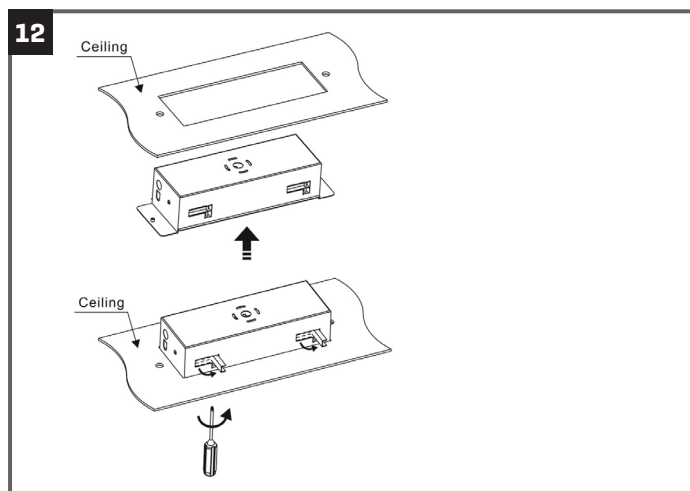
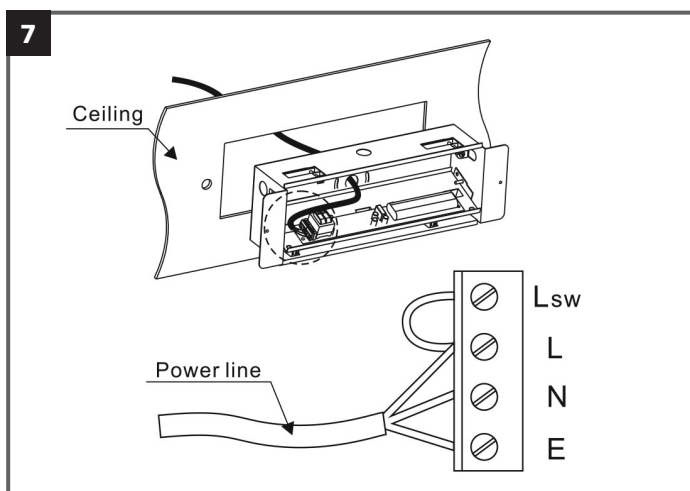
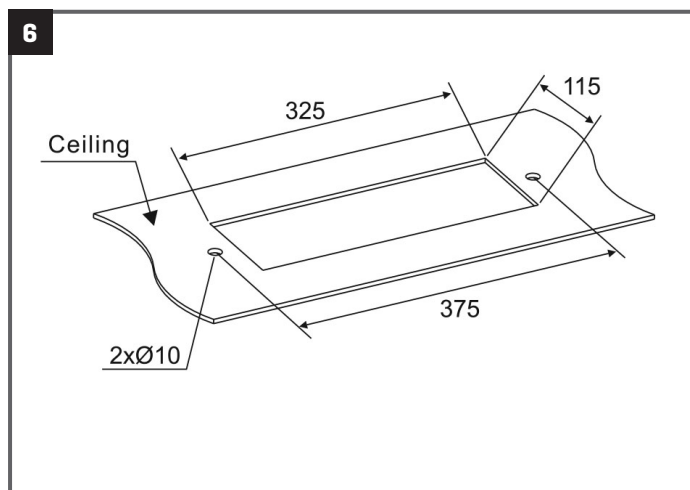
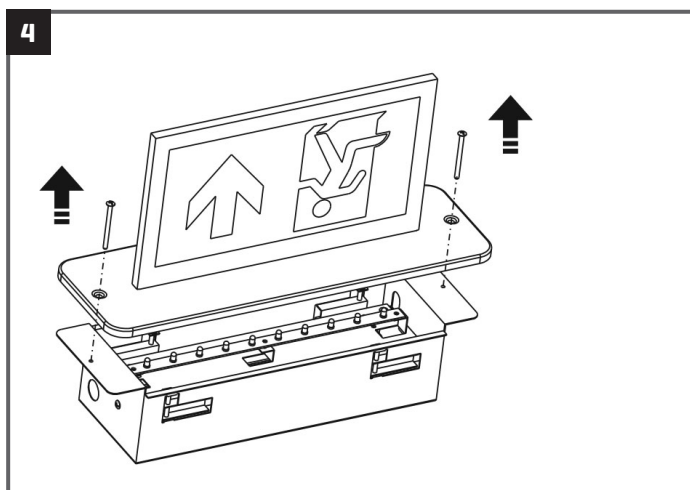
<b>Dimensions:</b>	Legend: L: 260 x W: 135 x D: 10mm Housing: L:410 x W:300 x D: 10mm
<b>Material:</b>	Body: Steel Legend: Polycarbonate
<b>Colour Temperature:</b>	6000K
<b>CRI:</b>	Ra70
<b>LED Lifetime:</b>	L70B50 50,000Hrs
<b>IP Rating:</b>	IP20
<b>Working Temperature:</b>	0°C to 40°C
<b>Guarantee:</b>	1 Year



### Installation Instructions

1. Ensure there is free air circulation of at least 100mm around the fitting. All fittings run hot. It is the installer's responsibility to consider any fire risk and take appropriate precautions.
2. The nearest illuminated surface must be at least 0.5m from the front of the fitting.
3. Check for concealed cables before drilling any fixing holes.
4. Remove the diffuser from the body by removing the 2 screws.
5. Release the gear tray by removing the 2 retaining screws.
6. Fix the base to the ceiling. Use the diagram to ensure the cut-out is correct.
7. Make connections to the mains supply according to the following wiring colour coding.  
Live - brown or red  
Neutral - blue or black  
Earth - green or yellow  
Normally the supply will be taken from the lighting circuit and the permanent live connected to the live terminal in the fitting.

8. Write the current date on the battery pack.
9. Connect the battery pack to the circuit board.
10. To operate the fitting in non-maintained mode, remove the link from the terminals 'SW'.
11. If the fitting is to be switched, remove the link from the terminals marked 'SW' and connect the cables to and from your switch.
12. Resecure the gear tray into the base of the unit making sure that the mains cable is not trapped by the PCB etc.
13. Refit the diffuser using the 2 screws.



## Fault Finding & Corrective Action

---

- Fault** - The green led indicator is not illuminated.  
**Action** - the A.C. supply is not connected, or the battery is not connected, or the charger has failed.
- Fault** - The unit is not meeting the required emergency duration.  
**Action** - The fitting may need cycling. Discharge and then recharge for a full 24 hours and then retest. The battery may need replacing if the emergency duration is still not achieved.

## Guarantee

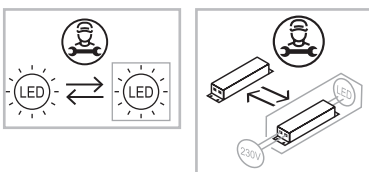
---

This product is guaranteed for a period of 1 years from the date of purchase. The guarantee is invalid in the case of improper use, tampering, removal of the Q.C. date label, installation in an improper working environment or installation not according to the current edition of the I.E.E. Wiring Regulations (BS7671). The guarantee is also invalidated if the luminaire has been insulation tested. Should this product fail during the guarantee period it will be replaced free of charge, subject to correct installation and return of the faulty unit. We do not accept responsibility for any installation costs associated with the replacement of this product. Your statutory rights are not affected. We reserve the right to alter specifications without prior notice.

## Maintenance

---

- This fitting will require routine cleaning if used in adverse (dust, paint, welding, oils etc) environments. Do not use solvents, aggressive detergents or abrasives.
- The light source & driver in this luminaire can be quickly and easily replaced at end of life. This should be carried out by a competent person. Contact Red Arrow for details of replacements.



- When this fitting comes to the end of it's life or you choose to replace it, please do not dispose of it with your normal waste. Please recycle where the facilities exist, check with your local authority for suitable options.

INS\_EMERGENCY\_0008\_LFACLED502B\_V2