

INSTALLATION INSTRUCTIONS

DISCUS LED DOWNLIGHTS

Product Codes: **DSC18D-40, DSC1018-40, DSC1018PIR-40**

Safety Warning



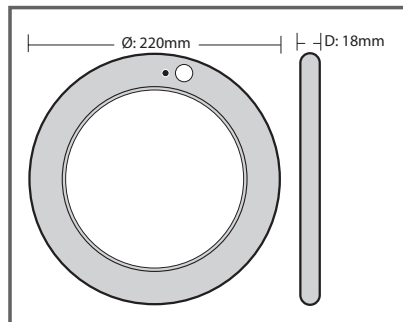
- The installation should be carried out by a qualified electrician in compliance with the current edition of the IEE Wiring Regulations.
- Prior to installation, carry out the necessary risk assessment considering the people who could be at risk, the level of risk and the precautions required to control the risk
- Ensure that the circuit supply is isolated either by the circuit supply fuse being removed or the applicable circuit breaker being turned off before installation or any maintenance.
- Check the total load on the circuit ensuring the luminaire does not exceed the rating of the circuit cable, fuse or circuit breaker.
- Long-term use and voltage fluctuations can reduce the life span of the fitting.
- If the fitting incorporates control gear, ensure careful sizing to avoid instances of nuisance tripping of the protective device used in the installation.
- Follow the provided installation instructions, using the fixings supplied or recommended.
- Keep out of reach of children.



Specification

Box Contents -
1 x Discus LED Downlight

Dimensions:	Ø: 220 x D: 18mm
Material:	Body - Polycarbonate and Aluminium - White finish Diffuser - PS
Working Temperature:	-20°C - 45°C
Included:	H03VVH2-F 2 x 0.75mm 30cm Cable
Suitable Dimmers	AU-DSP250 & AU-DSP400X - Aurora DM400AP - BG DPD-LED - Danlers DV21911 - Crabtree MO400 - Zano VFR400 - Knightbridge V-PRO - Varilight

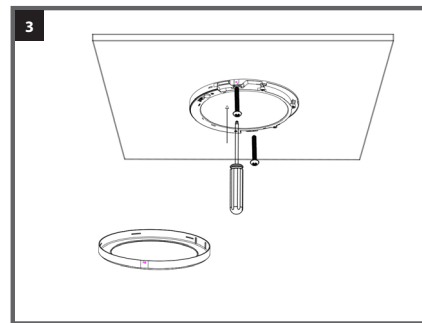
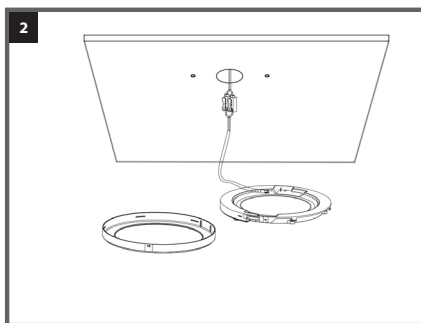
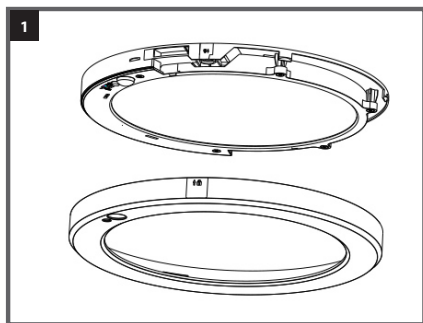


Maximum Fittings per Circuit

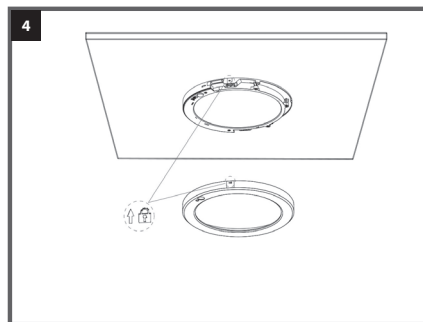
Automatic Circuit Breaker Type:	B6	B10	B13	B16	B20	C10	C13	C16	C20
Rated Current:	6A	10A	13A	16A	20A	10A	13A	16A	20A
Cable (mm):	1.5	1.5	1.5	1.5	2.5	1.5	1.5	1.5	2.5
DSC18D-40:	60	100	100	100	160	100	100	100	160
DSC1018-40 & DSC1018PIR-40 (10W):	60	105	105	105	175	105	105	105	175
DSC1018-40 & DSC1018PIR-40 (15W):	41	70	70	70	118	70	70	70	118
DSC1018-40 & DSC1018PIR-40 (18W):	35	60	60	60	100	60	60	60	100

Installation Instructions - Surface Mounted

1. Remove Bezel.
2. Connect the power cable to the supply cable.
3. Use the screws provided - fix the fitting to the ceiling or wall through fixing holes in the body.

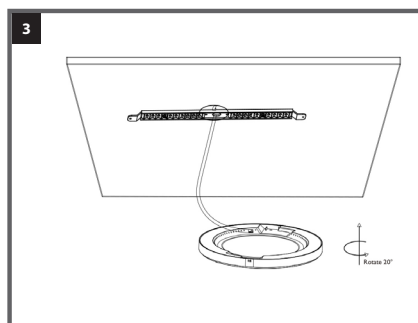
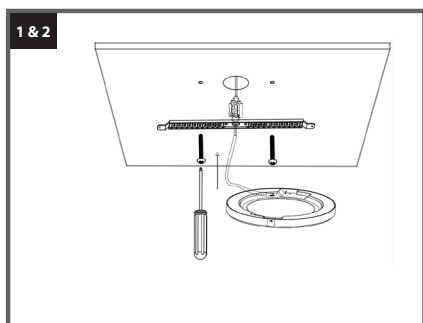


4. Refit the bezel, ensuring the lock marks are aligned.



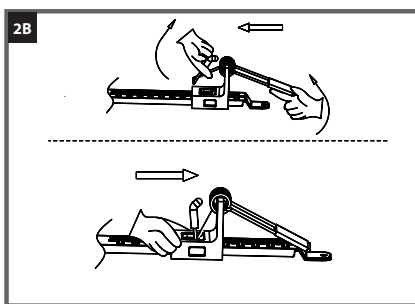
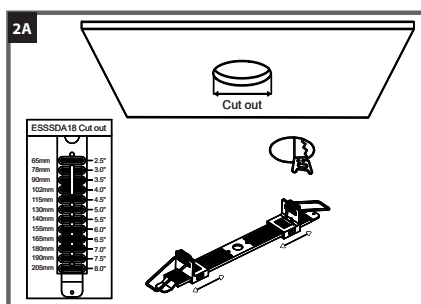
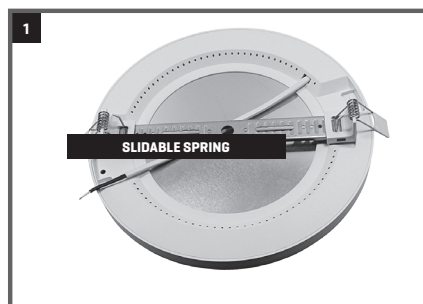
Installation Instructions - Surface Mounted with Bracket

1. Fix the mounting bracket to the ceiling / wall using the screws provided.
2. Connect the power cable to the supply cable.
3. Offer up the fitting to the bracket, aligning the ends of the bracket with the slots / keyways on the back of the fitting. Twist the fitting clockwise to engage it onto the bracket.

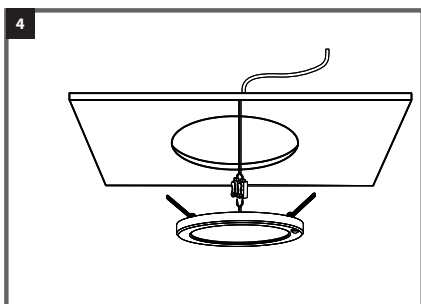
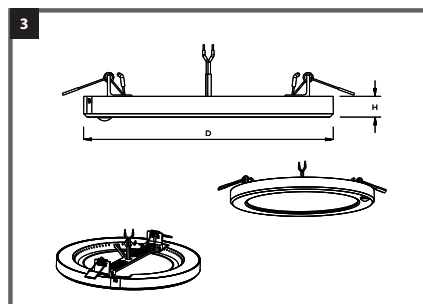


Installation Instructions - Semi-Recessed

1. Discus fits all cut-outs from 65-205mm*
2. Adjust the springs to the required position to fit the cut-out, using the measurement guides marked on the bracket.



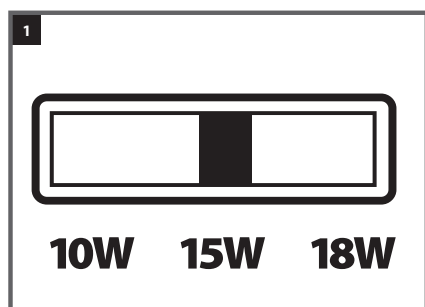
3. Attach the bracket to the fitting, align the ends of the bracket with the slots / keyways and then twist clockwise to engage.
4. Connect the power cable to the supply cable. Pull up the springs and offer up into ceiling cut-out. Push fitting up flush to the ceiling.



*Will also fit a suitably sized square / rectangular cut-out

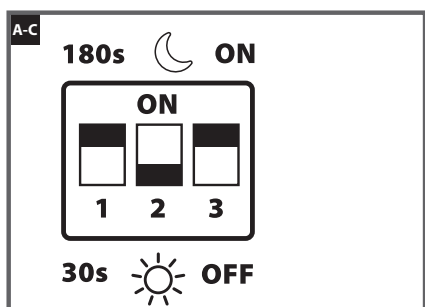
Wattage Selectable Instructions (DSC1018-40)

1. Use the selector switch, located behind the bezel, to switch between 10W, 15W & 18W.



Wattage Selectable with PIR (DSC1018PIR-40)

- A. Switch 1: Select a switch off delay of 30 seconds or 180 seconds after last presence detected.
- B. Switch 2: Select the Sun symbol to disable photocell so that the PIR operates regardless of available ambient daylight level. Select the Moon symbol to enable the photocell so that the PIR only operates the luminaire if there is insufficient daylight.
- C. Switch 3: Turn the PIR sensor on or off. Selecting off disables the PIR and the luminaire has to be switched via a suitable wall switch.

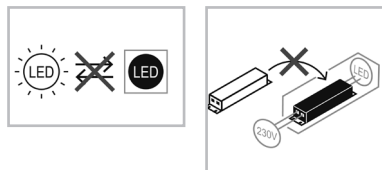


Guarantee

This product is guaranteed for a period of 3 years from the date of purchase. The guarantee is invalid in the case of improper use, tampering, removal of the Q.C. date label, installation in an improper working environment or installation not according to the current edition of the I.E.E. Wiring Regulations (BS7671). The guarantee is also invalidated if the luminaire has been insulation tested. Should this product fail during the guarantee period it will be replaced free of charge, subject to correct installation and return of the faulty unit. We do not accept responsibility for any installation costs associated with the replacement of this product. Your statutory rights are not affected. We reserve the right to alter specifications without prior notice.

Maintenance

- This fitting will require routine cleaning if used in adverse (dust, paint, welding, oils etc) environments. Do not use solvents, aggressive detergents or abrasives.
- The light source & driver in this luminaire are non-replaceable.



- When this fitting comes to the end of its life or you choose to replace it, please do not dispose of it with your normal waste. Please recycle where the facilities exist, check with your local authority for suitable options.

INS/COMMERCIAL/0013/DSC/V2