

INSTALLATION INSTRUCTIONS

PEAK MINI WALLPACK

Product Codes: **PK15-CCT, PK15E-CCT, PK15PC-CCT, PK15EPC-CCT**

Safety Warning



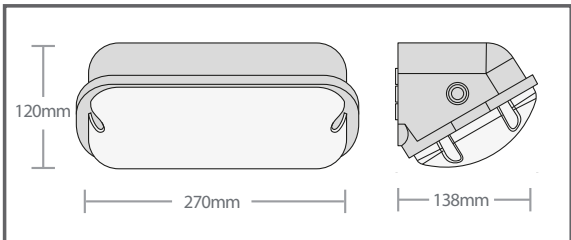
- The installation should be carried out by a qualified electrician in compliance with the current edition of the IEE Wiring Regulations.
- Prior to installation, carry out the necessary risk assessment considering the people who could be at risk, the level of risk and the precautions required to control the risk
- Ensure that the circuit supply is isolated either by the circuit supply fuse being removed or the applicable circuit breaker being turned off before installation or any maintenance.
- Check the total load on the circuit ensuring the luminaire does not exceed the rating of the circuit cable, fuse or circuit breaker.
- Long-term use and voltage fluctuations can reduce the life span of the fitting.
- If the fitting incorporates control gear, ensure careful sizing to avoid instances of nuisance tripping of the protective device used in the installation.
- Follow the provided installation instructions, using the fixings supplied or recommended.
- Keep out of reach of children.



Specification

Box Contents -
1 x Peak Mini Wallpack

Dimensions:	L:270 x W:120 x D:138mm
Material:	Polycarbonate
Working Temperature:	-10°C to 40°C (EM 5°C to 40°C)
Included:	Accessory Kit - 4x fixing screws, sealing washers and wall plugs, blind grommet



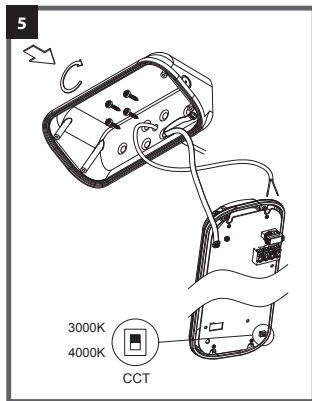
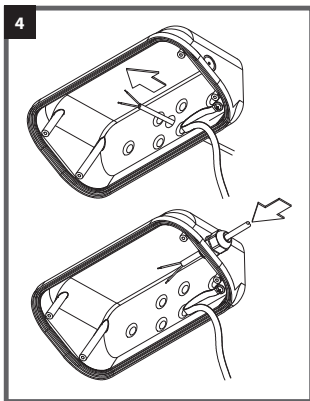
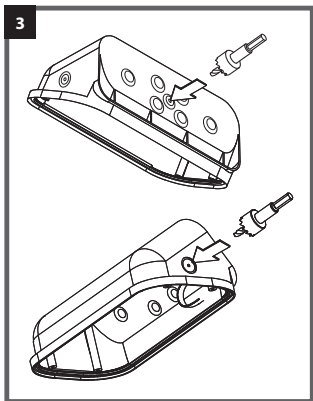
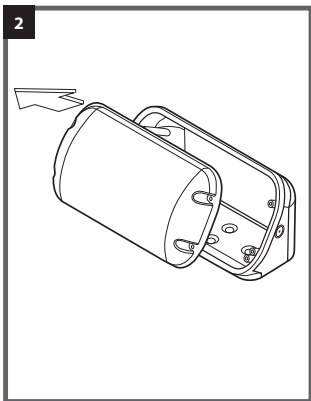
*Emergency batteries
2 years

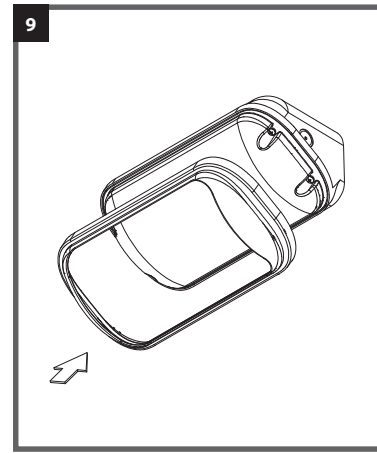
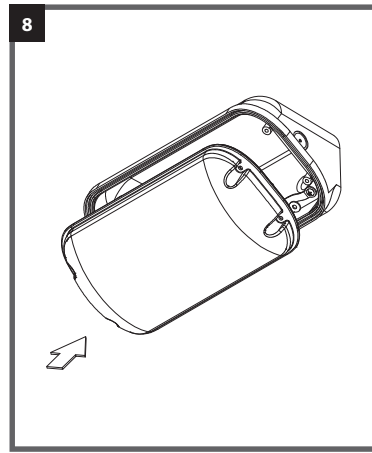
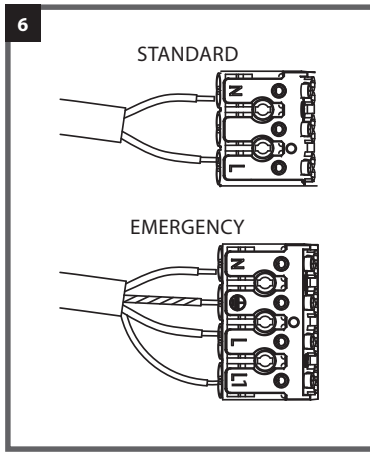
MAXIMUM FITTINGS PER CIRCUIT

Automatic Circuit Breaker Type:	B6	B10	B13	B16	B20	C10	C13	C16	C20
Rated Current:	6A	10A	13A	16A	20A	10A	13A	16A	20A
Cable (mm):	1.5	1.5	1.5	2.5	2.5	1.5	1.5	2.5	2.5
PK15-CCT	80	130	170	210	260	220	280	350	440
PK15E-CCT	70	120	155	190	235	200	260	330	420
PK15PC-CCT	65	125	160	200	245	210	270	340	430
PK15EPC-CCT	60	110	145	180	220	190	250	315	410

Installation Instructions

- Select the preferred installation position and check to ensure there are no obstructions, pipes or concealed cables before drilling any fixing holes.
- Remove the trim by unclipping from the diffuser, then remove the diffuser by loosening the tamper resistant retaining screws.
- Select the cable entry point on the back or either end of the base and drill through.
- Feed the supply cable through the hole, sealing the entry by using the grommet supplied or use a suitable IP rated cable gland. If the rear cable entry is not used, ensure it is sealed to maintain the IP rating.
- Position and fix the base to the mounting surface, using the screws and sealing washers provided at the four fixing positions.





6. Terminate the supply cable into the terminal block on the rear of the gear tray, observing correct polarity. Use the strain relief clamp to retain the cable. Standard fittings are Class II Double Insulated, no earth required. Emergency versions are Class I and require an earth connection. Emergency versions also require an un-switched/permanent live connection (L1).
7. Select the required CCT (colour appearance) 3000K or 4000K, using the dip switch on the gear tray. The factory default setting is 4000K.
8. Replace the diffuser and tighten the retaining screws, ensuring no cables are trapped.
9. Replace the trim by locating the pip under the base lip at one end then firmly push and click the trim into position.
10. Restore the power supply and check for correct operation.

Photocell Versions

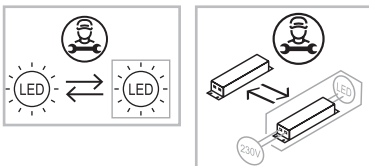
- The built-in photocell will automatically turn the luminaire on at dusk (approx. 10-30 lux) and off at dawn (approx. 30-60 lux)
- When selecting a mounting position, do not install with the photocell facing any artificial or reflected light, as this may cause the fitting to cycle on and off at night.

Guarantee

This product is guaranteed for a period of 3 years (emergency batteries 2 years) from the date of purchase. The guarantee is invalid in the case of improper use, tampering, removal of the Q.C. date label, installation in an improper working environment or installation not according to the current edition of the I.E.E. Wiring Regulations (BS7671). The guarantee is also invalidated if the luminaire has been insulation tested. Should this product fail during the guarantee period it will be replaced free of charge, subject to correct installation and return of the faulty unit. We do not accept responsibility for any installation costs associated with the replacement of this product. Your statutory rights are not affected. We reserve the right to alter specifications without prior notice.

Maintenance

- This fitting will require routine cleaning if used in adverse (dust, paint, welding, oils etc) environments. Do not use solvents, aggressive detergents or abrasives.
- The LEDs and Driver in this product can be replaced at the end of life. This must be carried out by a professional, competent person.
- This product contains a light source of energy efficiency class D.



- When this fitting comes to the end of its life or you choose to replace it, please do not dispose of it with your normal waste. The product can be dismantled for recycling by following step 2 of these instructions to remove the trim and diffuser. The gear tray can be removed by removing its retention screws. The gear tray should be recycled following WEEE guidelines. The housing, diffuser and trim are polycarbonate material. Please recycle using appropriate facilities. Check with your local authority for suitable options.

INS/OUTDOOR/0009/PK/V2