



INSTALLATION INSTRUCTIONS

Emergency Testing Sheet

Testing (Emergency Versions)

The emergency light must be tested and inspected regularly in accordance with local codes of practice.

NOTE: For safety reasons tests should be carried out preceeding time of low risk, to allow for battery recharge.

The minimum recommended test schedule is as follows:

Commissioning - After installation, allow 36 hours to ensure full battery charge, and then interrupt the supply; check after 3 hours that the lamp is still illuminated.

1. Daily - Check that the charge indicator LED is working.
2. Monthly - Interrupt the power supply for a period sufficient to ensure each lamp is illuminated. At the end of the test, restore the supply and check the indicator is illuminated.
3. Annually - Interrupt the supply as in 2, but for the full rated duration. Ensure the lamp is illuminated at the end of the rated duration. Restore the supply and check the indicator is illuminated.
4. Record the date and result of each test, attending to any maintenance required in the event of a test failure.

Luminaire Location

Date Installed

Date Commisioned

Month	Test	Year 1			Year 2			Year 3		
		Signed	Result / Action	Date	Signed	Result / Action	Date	Signed	Result / Action	Date
1	Functional									
2	Functional									
3	Functional									
4	Functional									
5	Functional									
6	Functional									
7	Functional									
8	Functional									
9	Functional									
10	Functional									
11	Functional									
12	Full Duration									

INS/EMERGENCY_TESTING_SHEET/V1

INSTALLATION INSTRUCTIONS

WPS Slimline Wallpack

Product Codes: **WPS30, WPS30E, WPS30PC, WPS30EPC**

Safety Warning



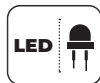
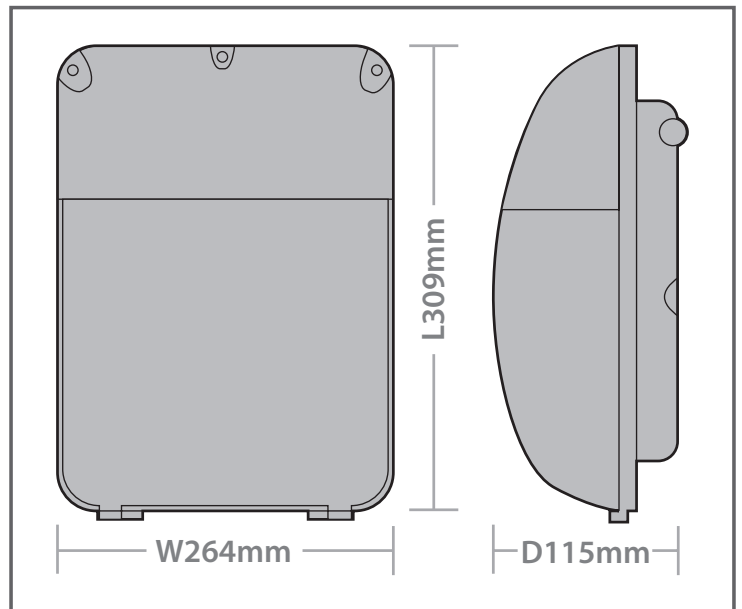
- The installation should be carried out by a qualified electrician in compliance with the current edition of the IEE Wiring Regulations.
- Prior to installation, carry out the necessary risk assessment considering the people who could be at risk, the level of risk and the precautions required to control the risk
- Ensure that the circuit supply is isolated either by the circuit supply fuse being removed or the applicable circuit breaker being turned off before installation or any maintenance.
- Check the total load on the circuit ensuring the luminaire does not exceed the rating of the circuit cable, fuse or circuit breaker.
- Long-term use and voltage fluctuations can reduce the life span of the fitting.
- If the fitting incorporates control gear, ensure careful sizing to avoid instances of nuisance tripping of the protective device used in the installation.
- Follow the provided installation instructions, using the fixings supplied or recommended.
- Keep out of reach of children.



Specification

Box Contents -
1 x WPS Slimline Wallpack


Dimensions:	L: 309 x W: 264 x D: 115mm
Material:	Body: Aluminium Diffuser: Polycarbonate
Colour Temperature:	6400K
CRI:	Ra>80
LED Lifetime:	L70B50 50,000Hrs
IP Rating:	IP65
IK Rating:	IK10
Working Temperature:	Standard: -20°C to 45°C Emergency:-0°C to 45°C
Power Factor:	>0.9
Guarantee:	4 Years (Emergency Batteries 1 Year)

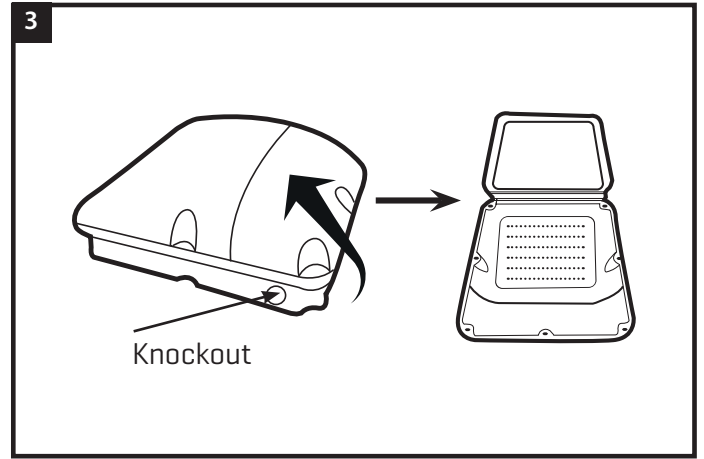
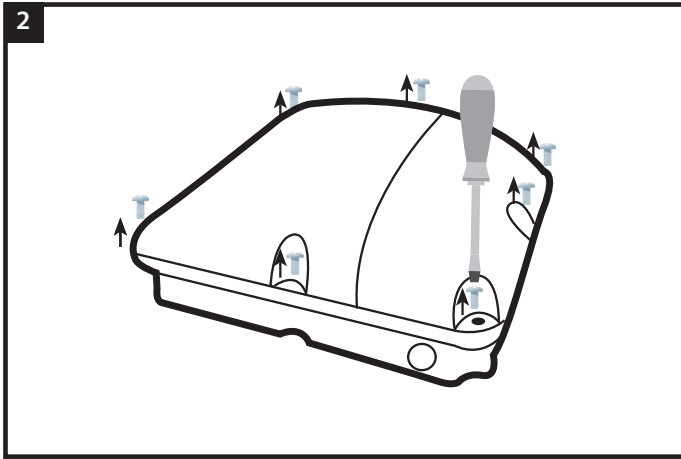


MAXIMUM FITTINGS PER CIRCUIT

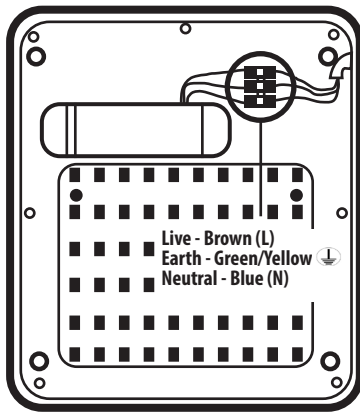
Automatic Circuit Breaker Type:	B6	B10	B13	B16	B20	C10	C13	C16	C20
Rated Current:	6A	10A	13A	16A	20A	10A	13A	16A	20A
Cable (mm):	1.5	1.5	1.5	2.5	2.5	1.5	1.5	2.5	2.5
WPS Wallpacks	10	25	42	64	100	42	70	109	166

Installation Instructions For Non-Emergency Version

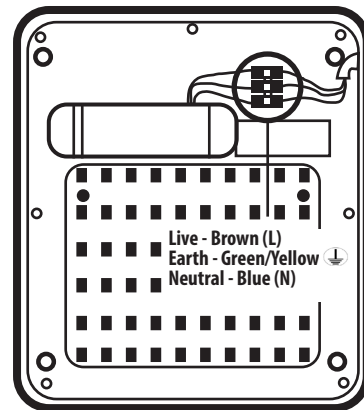
1. Ensure power is isolated. Select the correct supply cable type for outdoor use and suitable for the environment in which the fitting will be used.
2. Use a screwdriver to release the screws holding the diffuser in position.
3. Remove the diffuser and mount the body in the desired location using the fixings provided, ensuring the IP ratings are maintained.
4. Remove the cable entry knockout and pass the supply cable into the fitting using a suitable IP rated connector. Connect to the terminal block as follows
[see figs 4A & 4B]:
Live - Brown [L]
Earth - Green/Yellow 
Neutral - Blue [N]
Replace diffuser and turn on power



4A STANDARD

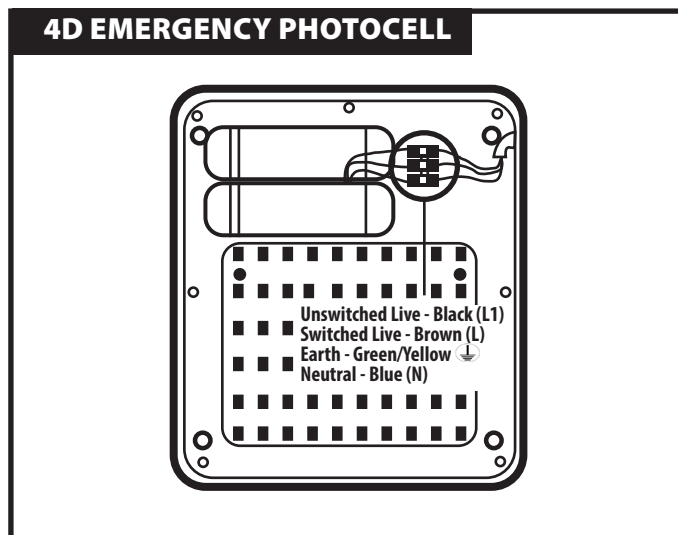
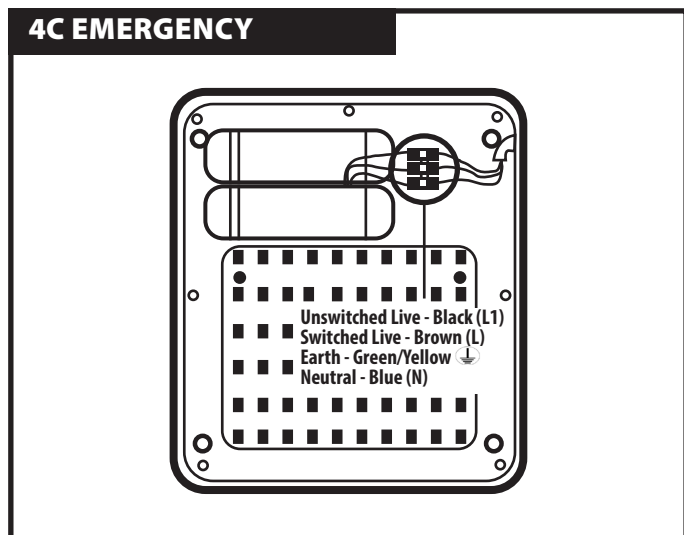


4B PHOTOCELL



Installation Instructions For Emergency Versions

- 1-3. Follow instructions 1-3 as for Non-Emergency versions
4. Remove the cable entry knockout and pass the supply cable into the fitting using a suitable IP rated connector. Connect to the terminal block as follows [see figs 4C & 4D]:
Unswitched live - Black [L1]
Switched live - Brown [L]
Earth - Green/yellow \downarrow
Neutral - Blue [N]
5. Replace diffuser and turn on power.
6. The battery charging circuit should be energised when the power supply is switched on.
7. This fitting will provide three hours emergency operation. After installation, allow 36 hours to ensure full battery charge before interrupting the supply to test
8. The Green charge indicator is visible through the diffuser.
9. When charged, the battery/invertor unit will provide power to the fitting during an interruption in the power supply. After installation the fitting should be routinely tested by qualified personnel using the schedule provided in this installation guide.

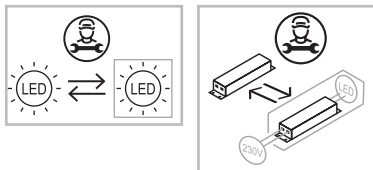


Guarantee

This product is guaranteed for a period of 4 years from the date of purchase. The guarantee is invalid in the case of improper use, tampering, removal of the Q.C. date label, installation in an improper working environment or installation not according to the current edition of the I.E.E. Wiring Regulations (BS7671). The guarantee is also invalidated if the luminaire has been insulation tested. Should this product fail during the guarantee period it will be replaced free of charge, subject to correct installation and return of the faulty unit. We do not accept responsibility for any installation costs associated with the replacement of this product. Your statutory rights are not affected. We reserve the right to alter specifications without prior notice.

Maintenance

- This fitting will require routine cleaning if used in adverse (dust, paint, welding, oils etc) environments. Do not use solvents, aggressive detergents or abrasives.
- The light source & driver in this luminaire can be quickly and easily replaced at end of life. This should be carried out by a competent person. Contact Red Arrow for details of replacements.



- When this fitting comes to the end of its life or you choose to replace it, please do not dispose of it with your normal waste. Please recycle where the facilities exist, check with your local authority for suitable options.

INS/OUTDOOR/0003/WPS/V3