

INSTALLATION INSTRUCTIONS

Rhombus CCT Back Lit Panels
Product Codes: RBE6636-CCT

Safety Warning



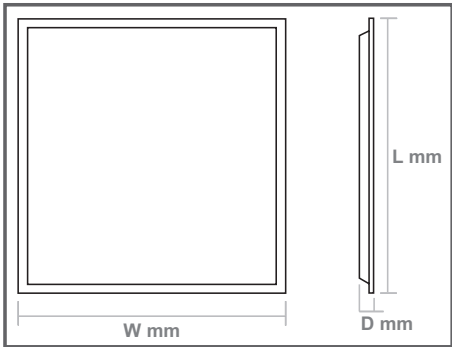
- The installation should be carried out by a qualified electrician in compliance with the current edition of the IEE Wiring Regulations.
- Prior to installation, carry out the necessary risk assessment considering the people who could be at risk, the level of risk and the precautions required to control the risk.
- Ensure that the circuit supply is isolated either by the circuit supply fuse being removed or the applicable circuit breaker being turned off before installation or any maintenance.
- Check the total load on the circuit ensuring the luminaire does not exceed the rating of the circuit cable, fuse or circuit breaker.
- Long-term use and voltage fluctuations can reduce the life span of the fitting.
- If the fitting incorporates control gear, ensure careful sizing to avoid instances of nuisance tripping of the protective device used in the installation.
- Follow the provided installation instructions, using the fixings supplied or recommended.
- Keep out of reach of children.



Specification

Box Contents -
 1 x Rhombus CCT Back Lit LED Panel, 1 x LED Driver

Dimensions:	L: 595mm x W: 595mm x D: 26mm
Material:	Body: Steel Frame: Aluminium Diffuser: TP(b) PS
Working Temperature:	Standard: -20°C to 45°C

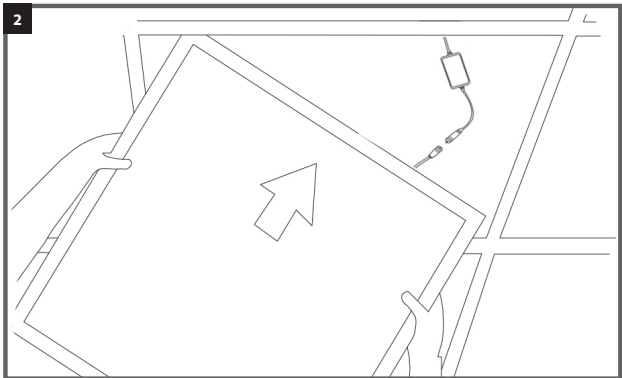
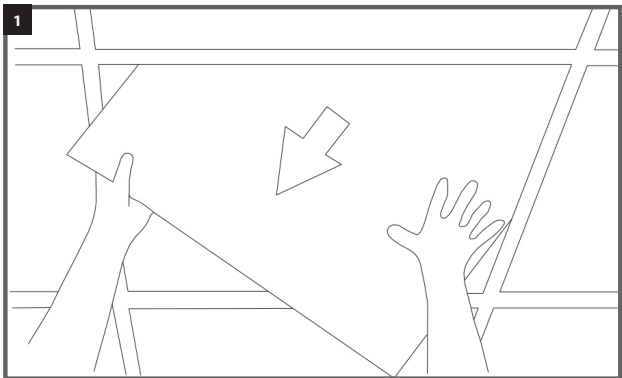


MAXIMUM FITTINGS PER CIRCUIT

Automatic Circuit Breaker Type:	B6	B10	B13	B16	B20	C10	C13	C16	C20
Rated Current:	6A	10A	13A	16A	20A	10A	13A	16A	20A
Cable (mm):	1.5	1.5	1.5	1.5	2.5	1.5	1.5	1.5	2.5
RBE6636-CCT	28W	12	30	51	77	120	50	84	131
	32W	10	26	44	67	105	44	74	114
	36W	9	24	39	60	93	39	66	102
	40W	8	21	35	54	84	35	59	91

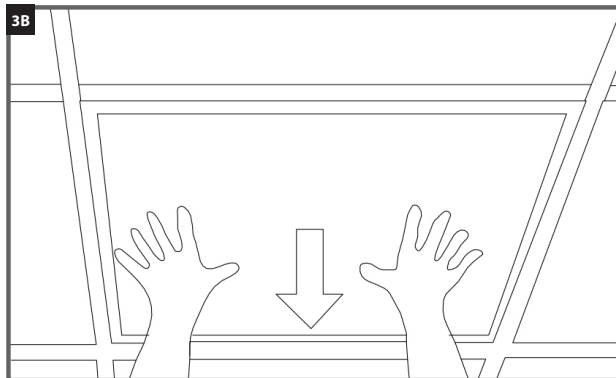
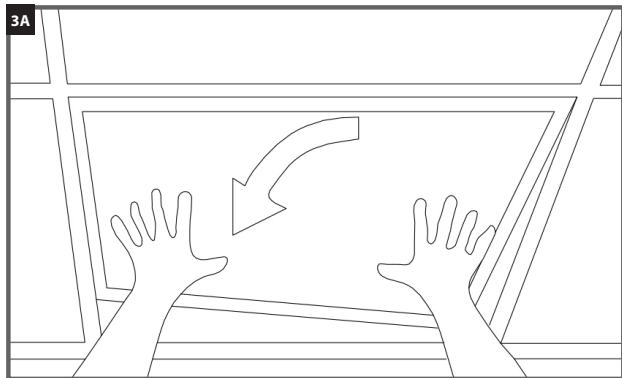
Installation Instructions

- Ensure the mains power is disconnected and then remove the ceiling tile or existing light fitting from the ceiling.
- Connect the wires from the mains supply to the led driver and then connect the pre-wired plugs from the panel to the socket on the output lead of the driver. Lift and tilt the LED panel through the ceiling grid opening.



- When the panel is through, orientate it horizontally and lower to rest onto the top of the tee bar on all four sides. Reconnect the mains supply once the panel is securely in position.

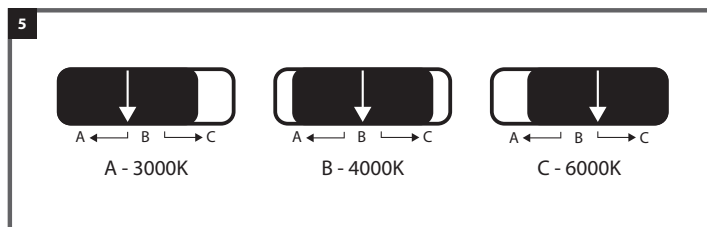
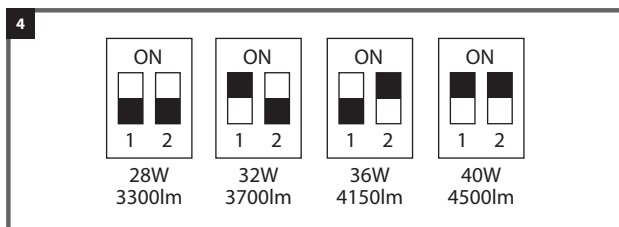
Note: Hot plug-in of the panel and LED driver is not permitted. The LEDs may be damaged due to high current and the warranty will be invalidated. The mains power must be isolated and wait for 30 seconds before connecting the panel to the driver.



Selectable Wattage & CCT

The wattage/lumen output and colour appearance (CCT) of this luminaire are adjustable.

- Select the required wattage using the dip switches located under the AC Input terminal cover. Set the dip switches into the configuration shown below to achieve the required wattage/lumen output. Note: the dip switches have a factory default setting of 36W/4150lm. Replace cover cap after changing the settings.
- Select the required CCT setting using the slider switch on the driver. Set the slider to the required position as shown below to achieve the required CCT. Note: the switch has a factory default setting of B - 4000K.



Please note that the lumen outputs shown above are based upon the CCT set at 3000K.

IMPORTANT NOTE: Do not change the settings of the Wattage and CCT switches after installation without first isolating the power supply. Using the switches when the luminaire is in a 'powered up' condition may damage the components and will void the warranty.

Emergency Operation

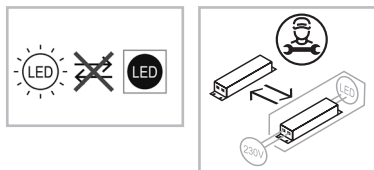
This luminaire can be converted to provide emergency light output in the event of a mains failure, using a Red Arrow TITAN remote emergency pack. Connect the kit to the panel using the white locking connectors on the Rhombus CCT driver. See kit instructions for further details. Do NOT connect the kit using the black connectors on the Rhombus CCT driver.

Guarantee

This product is guaranteed for a period of 5 years from the date of purchase. The guarantee is invalid in the case of improper use, tampering, removal of the Q.C. date label, installation in an improper working environment or installation not according to the current edition of the I.E.E. Wiring Regulations (BS7671). The guarantee is also invalidated if the luminaire has been insulation tested. Should this product fail during the guarantee period it will be replaced free of charge, subject to correct installation and return of the faulty unit. We do not accept responsibility for any installation costs associated with the replacement of this product. Your statutory rights are not affected. We reserve the right to alter specifications without prior notice.

Maintenance

- This fitting will require routine cleaning if used in adverse (dust, paint, welding, oils etc) environments. Do not use solvents, aggressive detergents or abrasives.
- The driver in this luminaire can be quickly and easily replaced. This should be carried out by a competent person. Contact Red Arrow for details of replacements.



- The LEDs in this light source are non-replaceable. When this fitting comes to the end of its life, please do not dispose of it with your normal waste. Please recycle where the facilities exist. Check with your local authority for suitable options.

INS/COM/0022/RBE-CCT/V2