

# INSTALLATION INSTRUCTIONS

## Rhombus Pro Back Lit Panel

Product Codes: **RBM6628-30, RBM6628-40, RBM6628-60, RBM12328-30, RBM12328-40, RBM12328-60, RBM12644-30, RBM12644-40 & RBM12644-60**

### Safety Warning



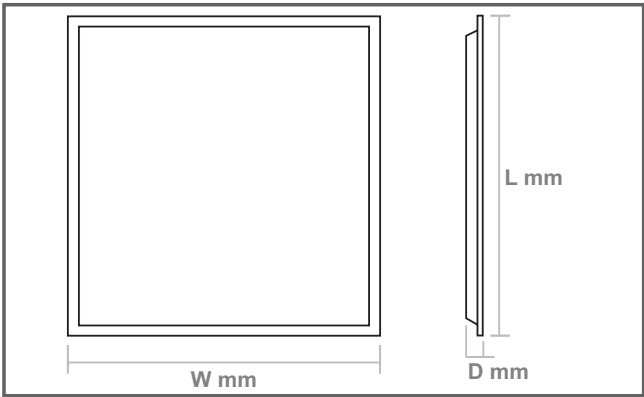
- The installation should be carried out by a qualified electrician in compliance with the current edition of the IEE Wiring Regulations.
- Prior to installation, carry out the necessary risk assessment considering the people who could be at risk, the level of risk and the precautions required to control the risk
- Ensure that the circuit supply is isolated either by the circuit supply fuse being removed or the applicable circuit breaker being turned off before installation or any maintenance.
- Check the total load on the circuit ensuring the luminaire does not exceed the rating of the circuit cable, fuse or circuit breaker.
- Long-term use and voltage fluctuations can reduce the life span of the fitting.
- If the fitting incorporates control gear, ensure careful sizing to avoid instances of nuisance tripping of the protective device used in the installation.
- Follow the provided installation instructions, using the fixings supplied or recommended.
- Keep out of reach of children.



### Specification

**Box Contents -**  
1 x Rhombus Pro Back Lit Panel, 1 x LED Driver

<b>Dimensions:</b>	RBM6628: L: 595mm x W: 595mm x D: 26mm RBM12328: L: 1195 x W: 295 x D: 26mm RBM12644: L: 1195 x W: 595 x D: 32mm
<b>Material:</b>	Body: Extruded Aluminium Frame, Steel Back Panel Diffuser: TP(a) rated, modified PS
<b>Working Temperature:</b>	Standard: -20°C to 45°C

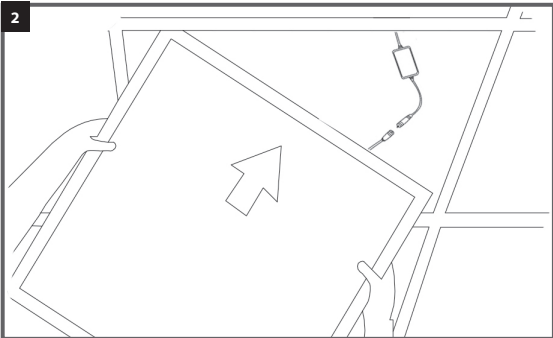
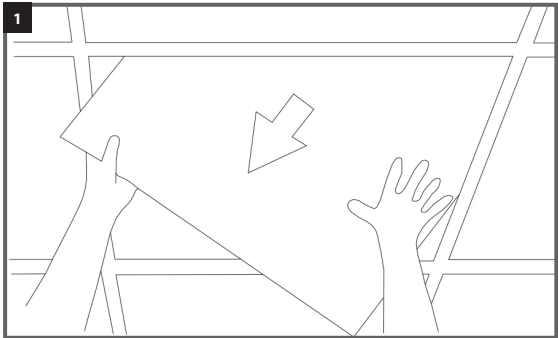


### MAXIMUM FITTINGS PER CIRCUIT

Automatic Circuit Breaker Type:	B6	B10	B13	B16	B20	C10	C13	C16	C20
<b>Rated Current:</b>	6A	10A	13A	16A	20A	10A	13A	16A	20A
<b>Cable (mm):</b>	1.5	1.5	1.5	1.5	2.5	1.5	1.5	1.5	2.5
<b>RBM6628-30/40/60</b>	12	33	54	83	129	54	91	141	215
<b>RBM12328-30/40/60</b>	12	33	54	83	129	54	91	141	215
<b>RBM12644-30/40/60</b>	8	21	35	53	82	34	58	90	137

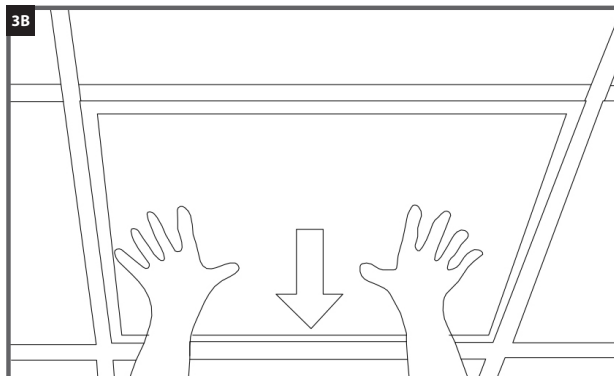
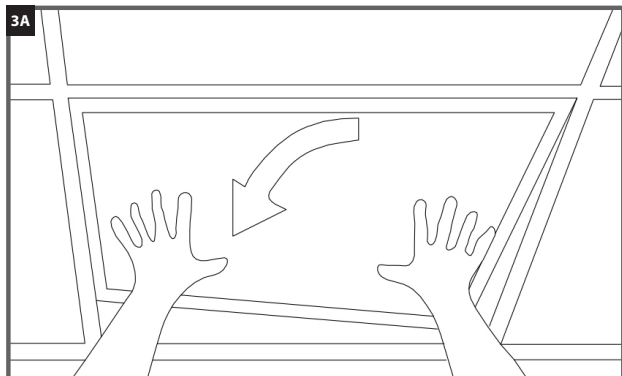
### Installation Instructions

- Ensure the mains power is disconnected and then remove the ceiling tile or existing light fitting from the ceiling.
- Connect the wires from the mains supply to the led driver and then connect the pre-wired plug from the panel to the socket on the output lead of the driver. Lift and tilt the LED panel through the ceiling grid opening.



- When the panel is through, orientate it horizontally and lower to rest onto the top of the tee bar on all four sides. Reconnect the mains supply once the panel is securely in position.

**Note:** Hot plug-in of the panel and LED driver is not permitted. The LEDs may be damaged due to high current and the warranty will be invalidated. The mains power must be isolated and wait for 30 seconds before connecting the panel to the driver.

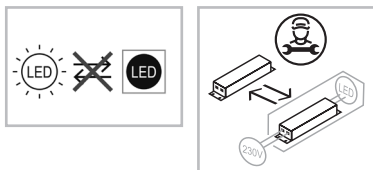


## Guarantee

This product is guaranteed for a period of 7 years from the date of purchase. The guarantee is invalid in the case of improper use, tampering, removal of the Q.C. date label, installation in an improper working environment or installation not according to the current edition of the I.E.E. Wiring Regulations (BS7671). The guarantee is also invalidated if the luminaire has been insulation tested. Should this product fail during the guarantee period it will be replaced free of charge, subject to correct installation and return of the faulty unit. We do not accept responsibility for any installation costs associated with the replacement of this product. Your statutory rights are not affected. We reserve the right to alter specifications without prior notice.

## Maintenance

- This fitting will require routine cleaning if used in adverse (dust, paint, welding, oils etc) environments. Do not use solvents, aggressive detergents or abrasives.
- The driver in this luminaire can be quickly and easily replaced. This should be carried out by a competent person. Contact Red Arrow for details of replacements.



- When this fitting comes to the end of its life, please do not dispose of it with your normal waste. Please recycle where the facilities exist. Check with your local authority for suitable options.

INS/COMMERCIAL/0017/RBM/V4