

INSTALLATION INSTRUCTIONS

Laser Linear Suspended Luminaire

Product Codes: **LAS4P/B/CCT, LAS4P/B/DALI/CCT, LAS4P/B/E/CCT, LAS4P/W/CCT, LAS4P/W/DALI/CCT, LAS4P/W/E/CCT, LAS4/MP, LAS4/B/UP/CCT, LAS4/W/UP/CCT, LAS5P/B/CCT, LAS5P/B/DALI/CCT, LAS5P/B/E/CCT, LAS5P/W/CCT, LAS5P/W/DALI/CCT, LAS5P/W/E/CCT, LAS5/MP, LAS5/B/UP/CCT, LAS5/W/UP/CCT**

Safety Warning



- The installation should be carried out by a qualified electrician in compliance with the current edition of the IEE Wiring Regulations.
- Prior to installation, carry out the necessary risk assessment considering the people who could be at risk, the level of risk and the precautions required to control the risk.
- Ensure that the circuit supply is isolated either by the circuit supply fuse being removed or the applicable circuit breaker being turned off before installation or any maintenance.
- Check the total load on the circuit ensuring the luminaire does not exceed the rating of the circuit cable, fuse or circuit breaker.
- Long-term use and voltage fluctuations can reduce the life span of the fitting.
- If the fitting incorporates control gear, ensure careful sizing to avoid instances of nuisance tripping of the protective device used in the installation.
- Follow the provided installation instructions, using the fixings supplied or recommended.
- Keep out of reach of children.

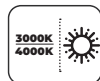
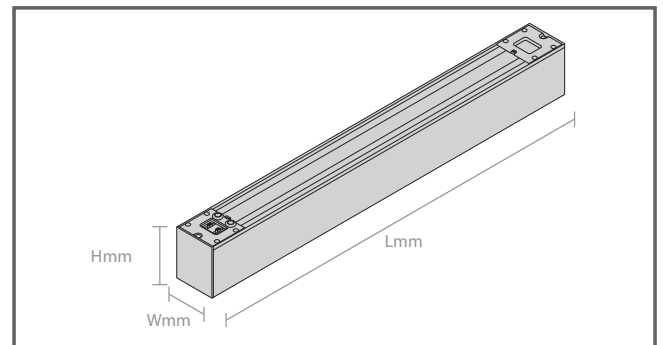


Specification

Box Contents -

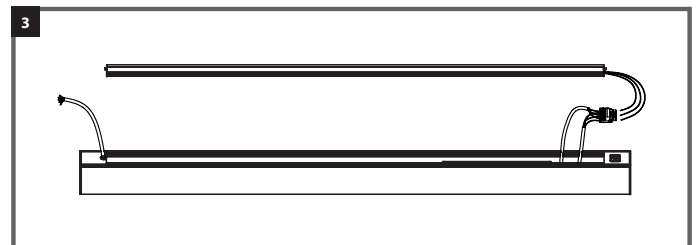
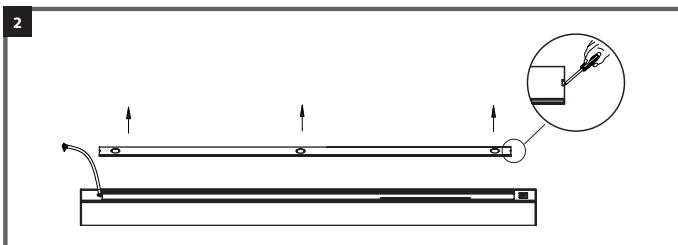
- 1 x Laser Linear Luminaire
- 1 x Kit Fixing Screws & Rawl Plugs
- 1 x Suspension Kit

Dimensions:	LAS4P/W/CCT, LAS4P/B/CCT, LAS4M/W/CCT & LAS4M/B/CCT: L: 1200 x W: 60x D: 75mm LAS5P/W/CCT, LAS5P/B/CCT, LAS5M/W/CCT & LAS5M/B/CCT: L: 1500 x W: 60 x D: 75mm LAS4/W/UP/CCT & LAS4/B/UP/CCT: L: 1085 x W: 42 x D: 10mm LAS5/W/UP/CCT & LAS5/B/UP/CCT: L: 1382 x W: 42 x D: 10mm
Material:	Aluminium Body & Polycarbonate Diffuser
Working Temperature:	Standard: -25°C - 45°C
Included:	Rawl Plugs, Screws, Suspension Kit, Click Fit Bracket

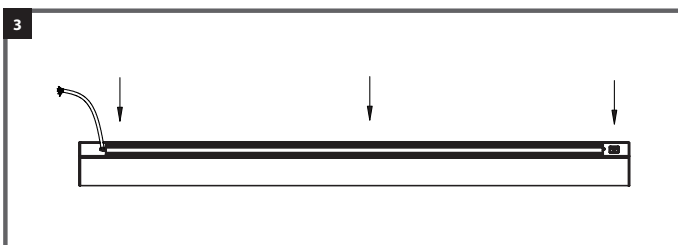


Uplight Module Installation Instructions

- Isolate the mains supply before commencing with the installation.
- Use a screwdriver to lift the top cover.
- Orientate the uplight module and connect using the quick connectors.



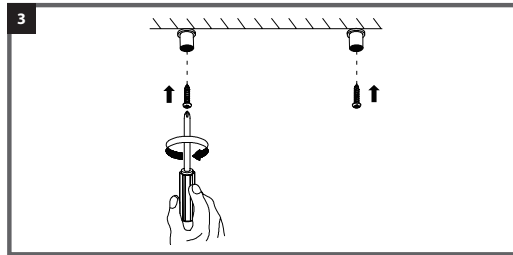
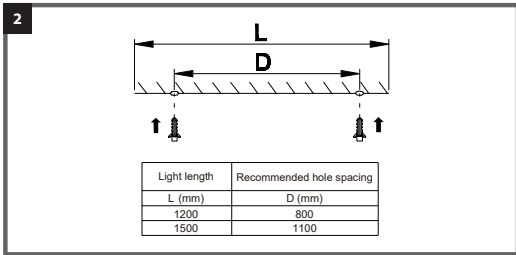
- Click fit the uplight module into the rear of the luminaire ensuring fully engaged down the length.
- After installation continue with the chosen installation method



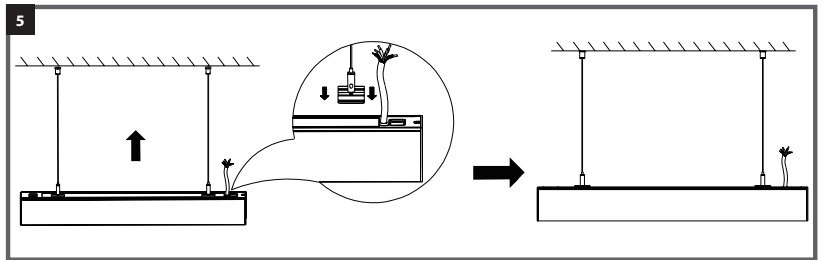
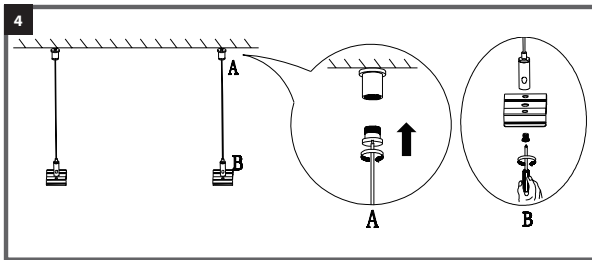
Suspension Installation Instructions

Note: This is a Class I Luminaire - Earth connection is required

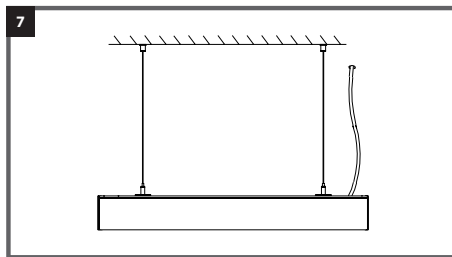
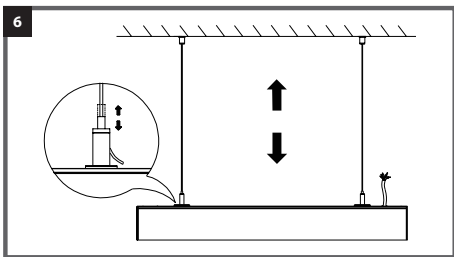
1. Isolate the mains supply before commencing with the installation.
2. Drill fixing holes and use suitable wall plugs for the mounting surface.
3. Fix 2 x ceiling roses onto the mounting surface.



4. Feed the suspension wire into the threaded insert (Picture A) fasten the click fit bracket onto the wire clutch (Picture B).
5. Fit click fit bracket onto the channel located on the rear of the fixture, ensuring bracket is fully engaged into the channel.



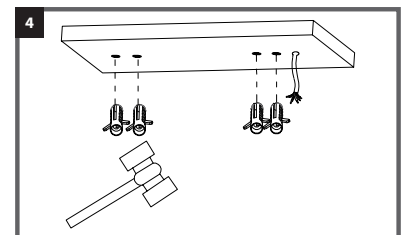
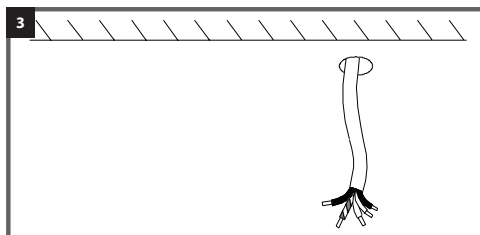
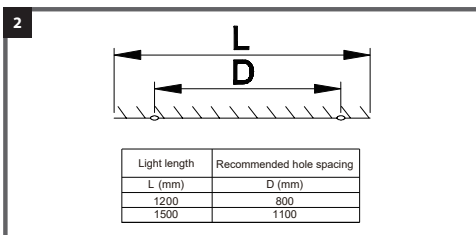
6. Adjust the height and level of the luminaire using the clutch located on the bracket.
7. Terminate the electrical cable to the mains supply ensuring correct polarity is observed. Ensure all conductors are fully sleeved and insulated. If dimming is not required ensure dimming cables are made safe to prevent shorting the dimming circuit.
8. Restore the mains power supply, switch on and test for satisfactory operation.



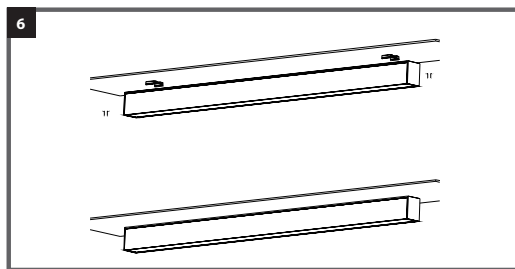
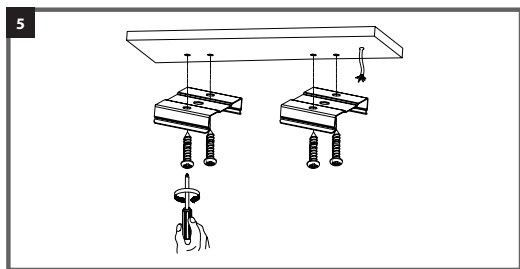
Surface Installation Instructions

Note: This is a Class I luminaire - Earth connection is required.

1. Isolate the mains supply before commencing with the installation.
2. Using the click fit brackets mark and drill the fixing holes.
3. Route the cable through the mounting surface local to the cable entry location on the luminaire.
4. Fit suitable wall plugs for the mounting surface.



5. Using suitable screws secure the click fit bracket onto the mounting surface, taking care not to over tighten the screws and deform the bracket.
6. Terminate the electrical cable to the mains supply ensuring correct polarity is observed. Ensure all conductors are fully sleeved and insulated. If dimming is not required ensure dimming cables are made safe to prevent shortening the dimming circuit.
7. Click the luminaire into the brackets ensuring correct engagement. Restore the mains power supply, switch on and test for satisfactory operation.

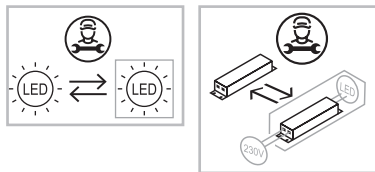


Guarantee

This product is guaranteed for a period of 5 years from the date of purchase. The guarantee is invalid in the case of improper use, tampering, removal of the Q.C. date label, installation in an improper working environment or installation not according to the current edition of the I.E.E. Wiring Regulations (BS7671). The guarantee is also invalidated if the luminaire has been insulation tested. Should this product fail during the guarantee period it will be replaced free of charge, subject to correct installation and return of the faulty unit. We do not accept responsibility for any installation costs associated with the replacement of this product. Your statutory rights are not affected. We reserve the right to alter specifications without prior notice.

Maintenance

- This fitting will require routine cleaning if used in adverse (dust, paint, welding, oils etc) environments. Do not use solvents, aggressive detergents or abrasives.
- The light source and driver in this luminaire can be quickly and easily replaced at end of life. This should be carried out by a competent person. Contact Red Arrow for details of replacements.



- When this fitting comes to the end of its life or you choose to replace it, please do not dispose of it with your normal household waste. Please recycle where the facilities exist, check with your local authority for suitable options.

INS/SURF/0001/LIN_SUS/V2