

Norma CCT Batten

Product Codes: **NOR4-37W-CCT, NOR5-54W-CCT, NOR6-62W-CCT**

Safety Warning



- The installation should be carried out by a qualified electrician in compliance with the current edition of the IEE Wiring Regulations.
- Prior to installation, carry out the necessary risk assessment considering the people who could be at risk, the level of risk and the precautions required to control the risk
- Ensure that the circuit supply is isolated either by the circuit supply fuse being removed or the applicable circuit breaker being turned off before installation or any maintenance.
- Check the total load on the circuit ensuring the luminaire does not exceed the rating of the circuit cable, fuse or circuit breaker.
- Long-term use and voltage fluctuations can reduce the life span of the fitting.
- If the fitting incorporates control gear, ensure careful sizing to avoid instances of nuisance tripping of the protective device used in the installation.
- Follow the provided installation instructions, using the fixings supplied or recommended.
- Keep out of reach of children.

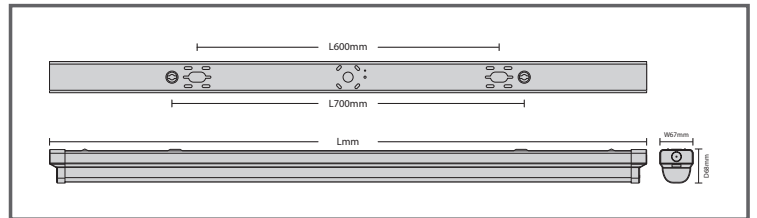


Specification

Box Contents -

1 x Norma CCT Batten & Fixings

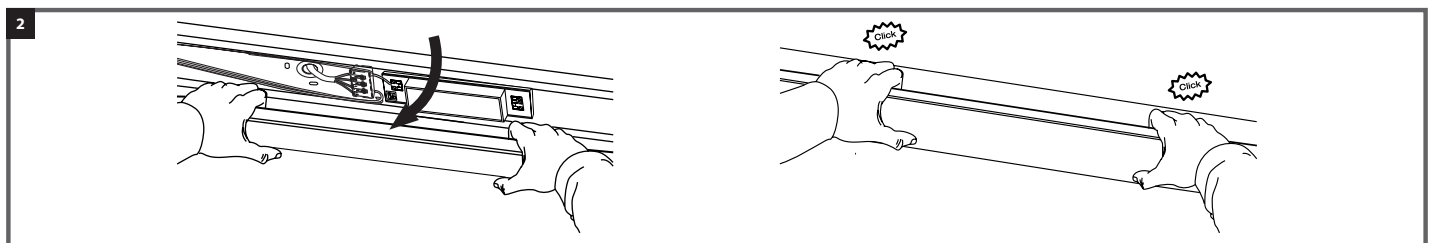
Dimensions:	NOR4-37W-CCT - L: 1175 x W: 61 x D: 71mm NOR5-54W-CCT - L: 1475 x W: 61 x D: 71mm NOR6-62W-CCT - L: 1772 x W: 61 x D: 71mm
Material:	Powder Coated Steel Body and Polycarbonate Diffuser
Working Temperature:	Standard: -20°C - 45°C



Installation Instructions

Note: This is a Class I Luminaire - Earth connection is required

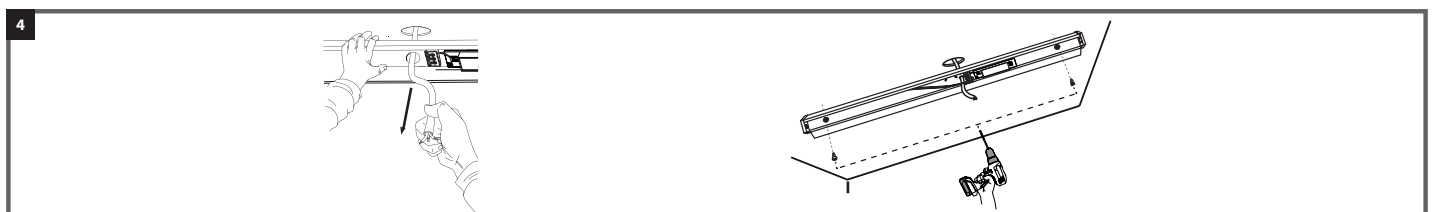
1. Isolate the mains supply before commencing with the installation.
2. Unclick the diffuser module from the base.



Installation Notice

If installing plug and play emergency or microwave sensor suggest reading Emergency / Microwave Instruction guide and fitting at floor level. Emergency and microwave kits can be fitted when the luminaire is installed if required

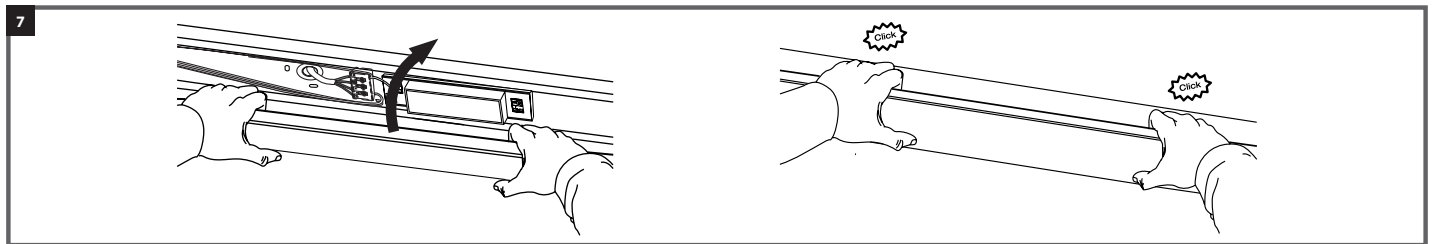
3. The fitting can be mounted using the BESA box entries on 600mm centres or can be fixed to the mounting surface using the key hole slots on 700mm centres. The fitting can also be wire or chain suspended using the various fixing locations on the back of the housing.
4.
 - A. Feed the mains cable through one of the entries on the back of the housing, or through a drill out conduit entry located on each end cap. Use a suitable grommet to protect the cable.
 - B. Hold the fitting up to the ceiling / wall in the desired position and mark hole fixing centres.
 - C. Drill fixing holes and use suitable wall plugs.
 - D. Fix in position with fixings supplied.



- Route the mains supply cable to the terminal block on the body and terminate, ensuring correct polarity is observed. Ensure all conductors are fully sleeved and insulated.



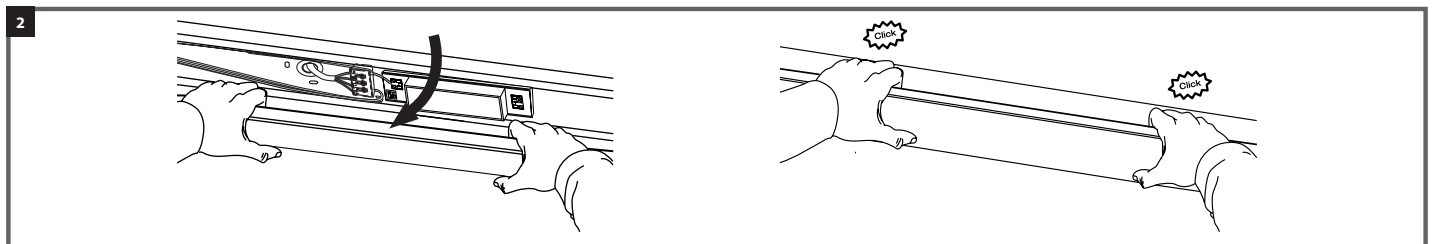
- Select the desired CCT and wattage using the dip switches, CCT located on top of the module and wattage located on top of the driver.
- Refit the diffuser module to the base. Ensure that the diffuser has securely clicked into place.
- Restore the mains power supply, switch on and test for satisfactory operation.



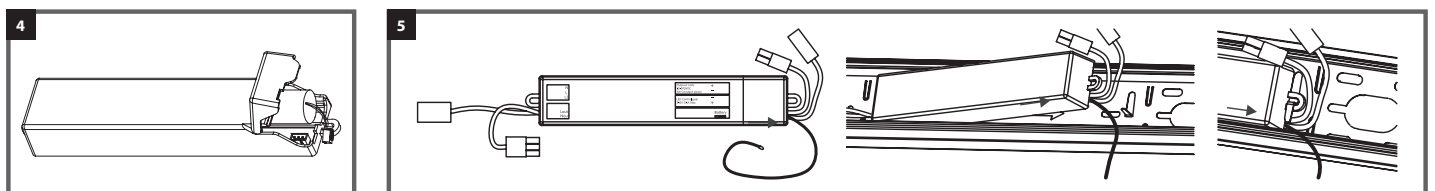
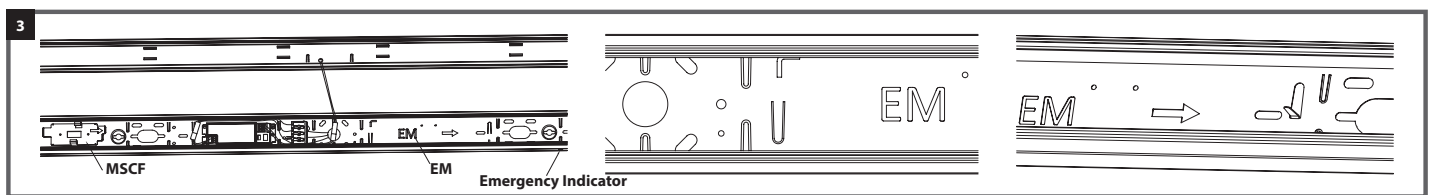
Plug and Play Installation Instructions Self-Test / Standard Emergency kit

Note: This is a Class I Luminaire - Earth connection is required

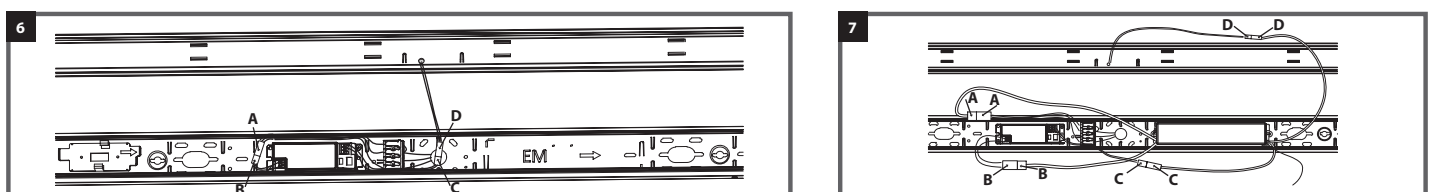
- Isolate the mains supply before commencing with the installation.
- Unclick the diffuser module from the base.



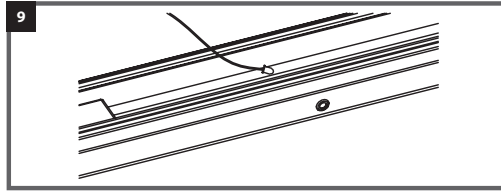
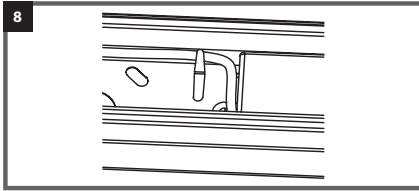
- Locating the Emergency mounting locations (shown as EM) fold the 2x tabs upright to locate the kit
- Before installing the emergency kit ensure that the battery cell door is open to allow for connecting the battery once installed with the luminaire. The kit will be supplied self-test as standard, if standard test mode is required change the jumper location as shown on the emergency kit before installing.
- Noting the orientation of the emergency kit (shown with an arrow) fit over the folded tabs and fold down securing the emergency kit into position.



- Releasing the locking arm first on each connector disconnect the A-B & C-D connectors shown below.
- Re connect all connectors following the below A-A, B-B, C-C, D-D ensuring all are securely connected and locking arm is engaged



8. Neatly secure all cables into position using the folded tabs ensuring no cables could become trapped during installation.
9. Locate the LED Indicator hole in the body (See Image 3. Emergency Indicator), fitting the black mounting ring first and then securing the LED Indicator. Followed by neatly securing the cable into position using the folded tabs to prevent trapping.



10. Connect the battery cell within the emergency kit and close the battery cell door.

11. Follow Steps 3 – 9 for installing the luminaire and terminating.

Note: Emergency luminaires require a secondary unswitched live supply as well as a switched supply. See step 5 for wiring configuration.

Self-test

- The Emergency kit will perform self-tests automatically to ensure its functionality.
- The self-test includes 4 types of tests:

Initial test

- When power supply is reconnected the emergency kit will carry out a 3-seconds functional test automatically.
- In case of a failure, the LED will turn permanent red. Otherwise, the charge mode will start.

One-time test

- When the power is first connected after installation the emergency kit will fully charge the batteries for 24hours.
- Then a one-time duration test will be performed.

Functional test

- Refers to charging, discharging and the functioning of load.
- This test will be performed for 10 seconds automatically every 30 calendar days.

Duration test

- Refers to the test of batteries capacity.
- This test will be performed at random intervals between every 170 - 180 calendar days. (This is to prevent all luminaires from performing a duration test at the same time)

Self-test is performed in line with EN 62034.

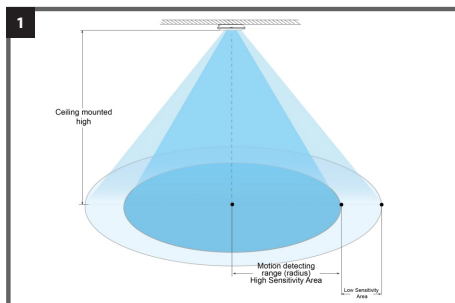
Explanation of LED Indicator

LED Colour	LED Indication	Status	Comment	
Green		Permanent Green	Charging Mode Fully Charged	AC mode
		Fast Flashing Green (0.1Sec On, 0.1 Sec Off)	Function Test Underway	
		Slow Flashing Green (1 Sec On, 1 Sec Off)	Duration Test Underway	
Red		Perminant Red	Load Failure	Open Circuit / Short Circuit LED failure (Emergency Mode)
		Slow Flashing Red (1 Sec On, 1 Sec Off)	Battery Failure	Battery failed the duration test or function test / No battery
		Green and Red Off	DC Mode	Battery operation (Emergency Mode)

Instructions for Microwave Sensor Set Up

The Microwave Sensor allows the Batten to detect when an occupant enters or leaves an area, turning the luminaire on or off accordingly.

1. The sensor should be positioned so that the occupants of the area fall inside the detection pattern shown in the diagram below.



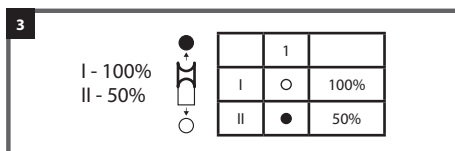
2. The diagram is based on a maximum ceiling mounting height of 5m. Note that the lower the sensor is installed, the smaller the detection range will be.

The distances quoted are approximate and may vary depending on the surroundings.

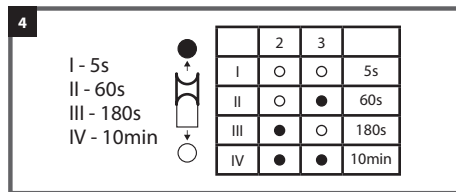
Do not site within 1m of forced air heating or ventilation.

Do not fix to a vibrating surface.

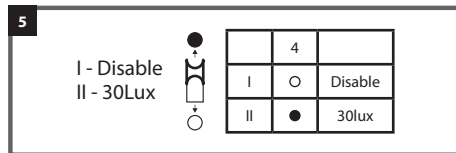
3. **Sensitivity** can be adjusted by selecting the required combination on dip switch 1 for different applications.



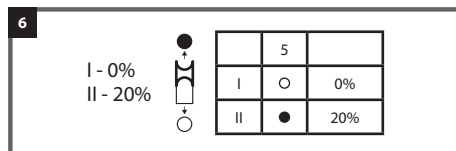
4. **Hold time** refers to the time period that the light remains on if no more movement is detected. Set using dip switches 2 & 3.



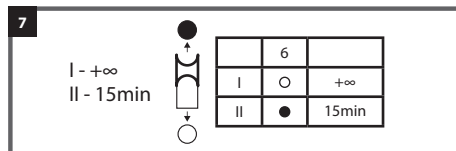
5. Different **daylight thresholds** can be pre-set using dip switch 4. Light will always turn on upon movement if daylight sensor is disabled.



6. **Stand by dimming level** refers to the light levels for the stand by hold time.



7. **Stand by time** refers to the time period that the light remains at a low level before it is completely turned off if the area continues not to be occupied. This can be set using dip switch 6.

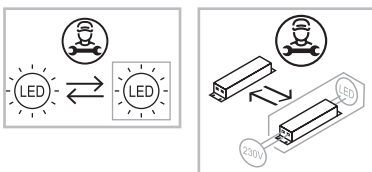


Warranty

This product is covered by a 3 year warranty from the date of purchase. The warranty is invalid in the case of improper use, tampering, removal of the Q.C. date label, installation in an improper working environment or installation not according to the current edition of the I.E.E. Wiring Regulations (BS7671). The warranty is also invalidated if the luminaire has been insulation tested. Should this product fail during the warranty period it will be replaced free of charge, subject to correct installation and return of the faulty unit. We do not accept responsibility for any installation costs associated with the replacement of this product. Your statutory rights are not affected. We reserve the right to alter specifications without prior notice.

Maintenance

- This fitting will require routine cleaning if used in adverse (dust, paint, welding, oils etc) environments. Do not use solvents, aggressive detergents or abrasives.
- The light source and driver in this luminaire can be quickly and easily replaced at end of life. This should be carried out by a competent person. Contact Red Arrow for details of replacements.



- When this fitting comes to the end of its life or you choose to replace it, please do not dispose of it with your normal household waste. Please recycle where the facilities exist, check with your local authority for suitable options.

INS/SURF/0010/NOR/V1