

Laser Connect

Product Codes: LAS-CON4/B/CCT, LAS-CON4/W/CCT, LAS-CON5/B/CCT, LAS-CON5/W/CCT

Safety Warning



- The installation should be carried out by a qualified electrician in compliance with the current edition of the IEE Wiring Regulations.
- Prior to installation, carry out the necessary risk assessment considering the people who could be at risk, the level of risk and the precautions required to control the risk
- Ensure that the circuit supply is isolated either by the circuit supply fuse being removed or the applicable circuit breaker being turned off before installation or any maintenance.
- Check the total load on the circuit ensuring the luminaire does not exceed the rating of the circuit cable, fuse or circuit breaker.
- Long-term use and voltage fluctuations can reduce the life span of the fitting.
- If the fitting incorporates control gear, ensure careful sizing to avoid instances of nuisance tripping of the protective device used in the installation.
- Follow the provided installation instructions, using the fixings supplied or recommended.
- Keep out of reach of children.

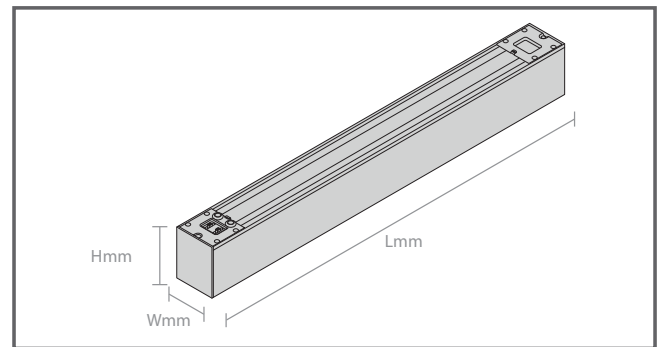


Specification

Box Contents -

- 1 x Laser Linear Luminaire
- 1 x Kit Fixing Screws & Rawl Plugs
- 1 x Suspension Kit

Dimensions:	LAS-CON4/B/CCT - L: 1205 x W: 60 x H: 75 mm LAS-CON4/W/CCT - L: 1205 x W: 60 x H: 75 mm LAS-CON5/B/CCT - L: 1505 x W: 60 x H: 75 mm LAS-CON5/W/CCT - L: 1505 x W: 60 x H: 75 mm
Material:	Aluminium Body & Polycarbonate Diffuser
Working Temperature:	Standard: -20°C to +40°C
Included:	Rawl Plugs, Screws, Suspension Kit, Click Fit Bracket

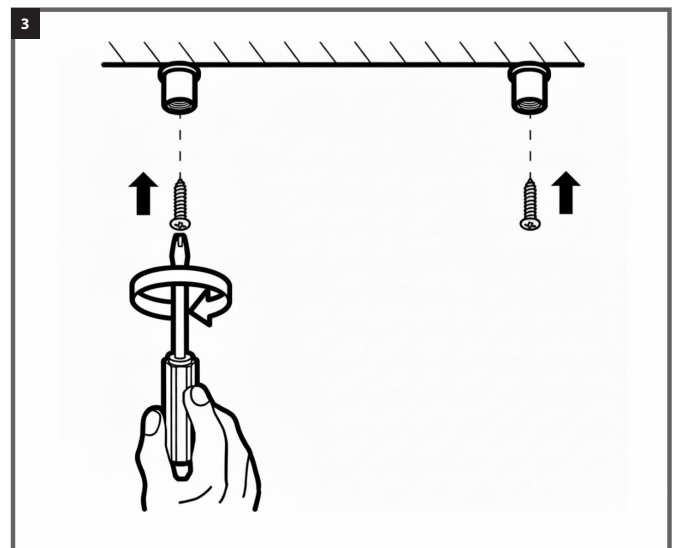


Suspended Installation

- Before installation isolate mains supply
- Drill 2 x 6mm holes in the desired location according to spacing guide
- Fix 2 suspension wire heads on the ceiling

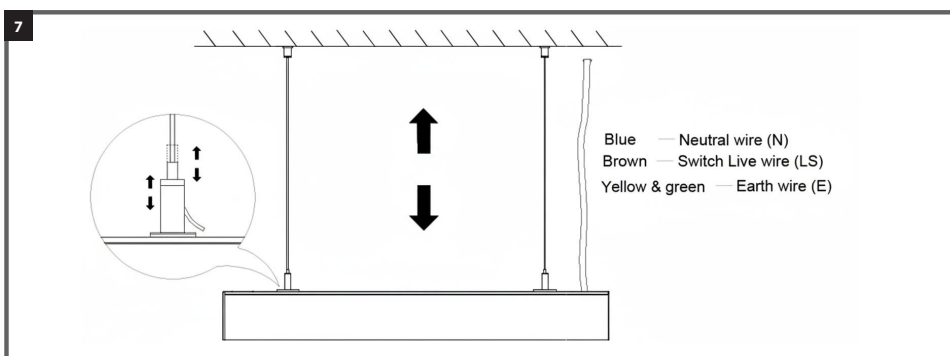
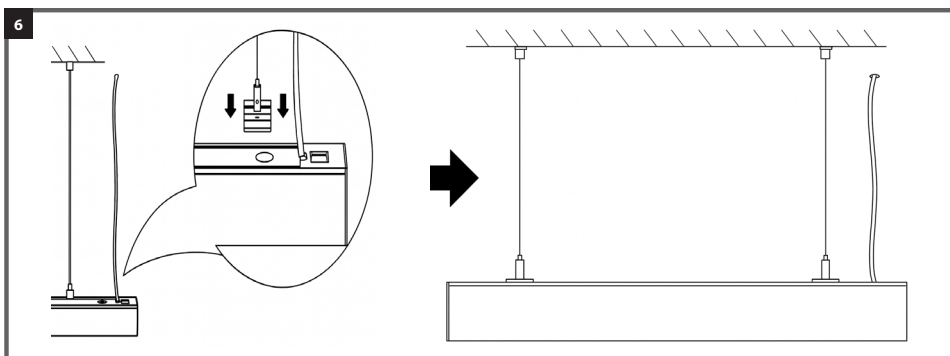
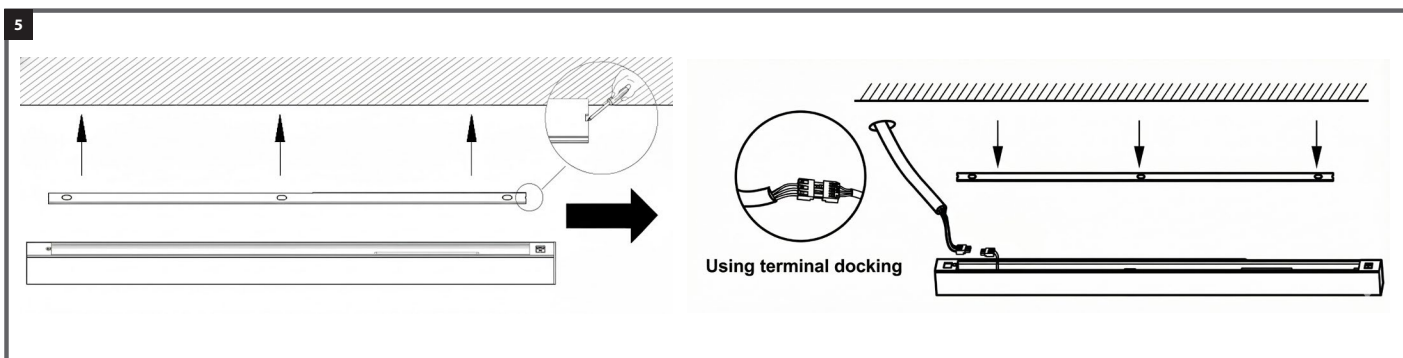
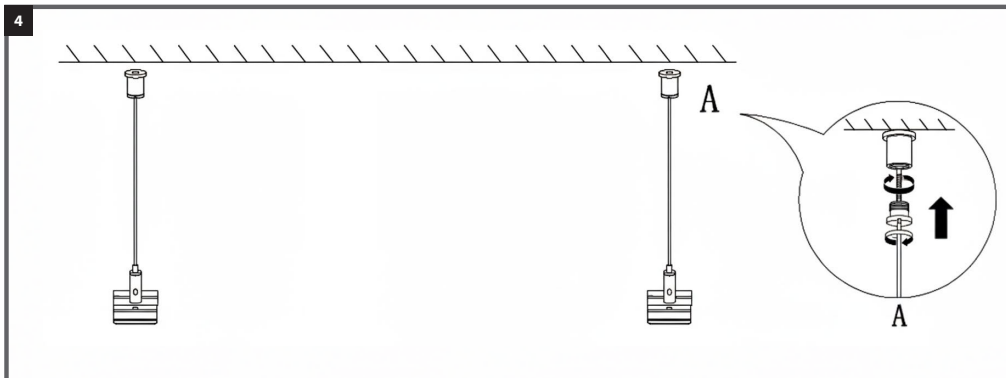
2

Light length	Recommended hole spacing
L (mm)	D (mm)
1205	800
1505	1100



Installation Instructions (Continuation)

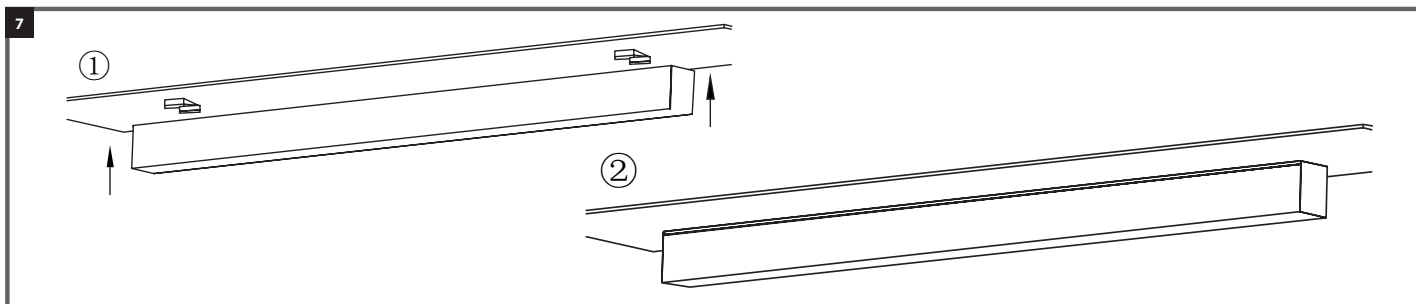
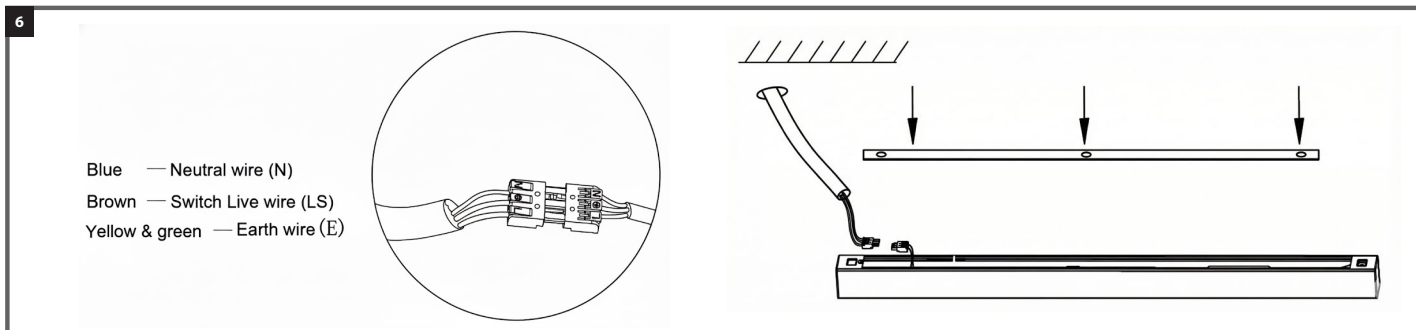
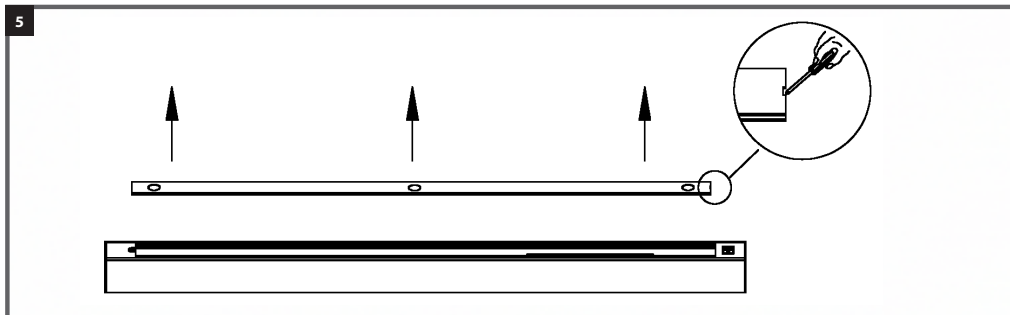
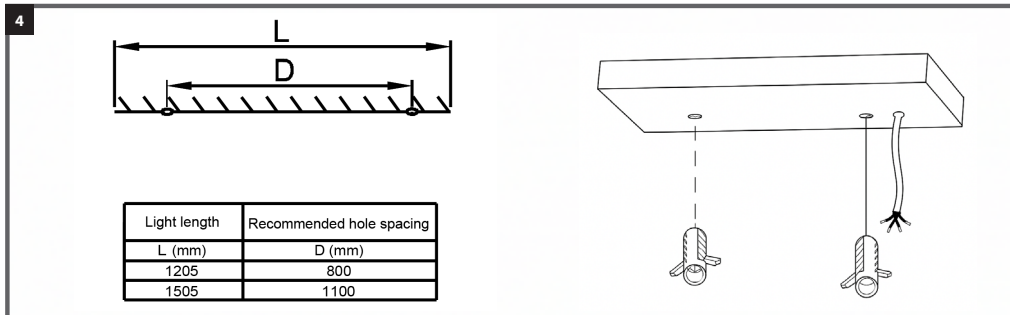
4. Fix the wire suspensions to the wire head on the ceiling
5. Open the top cover, take the input wire of the light, connect the light and connect the mains electricity.
6. Clip the suspension clamps on to the top of the light.
7. Adjust the suspension wire height to keep the light level
8. After installation, turn mains supply on



Surface Installation

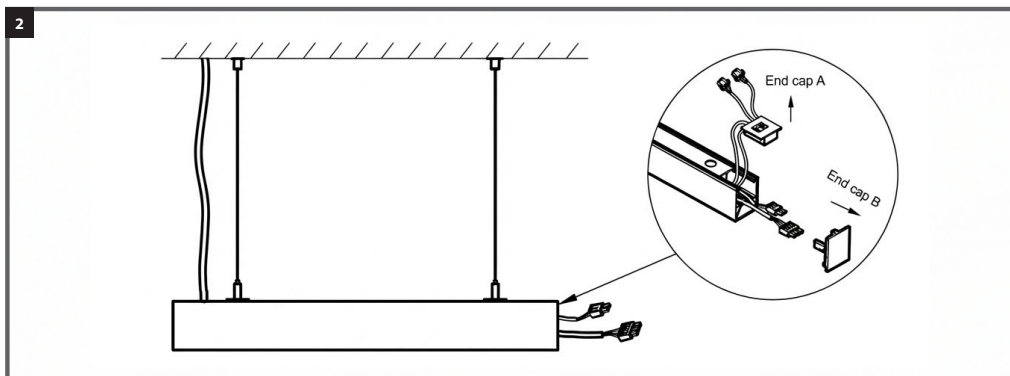
1. Before installation isolate mains supply
2. Drill 2 x 6mm holes in desired location according to spacing table
3. Insert the plastic dowel into the hole on the ceiling
4. Screw the fixing bracket to the ceiling (See Figure 4)
5. Open the top cover (See Figure 5)
6. Take the input wire of the light, connect the light and connect the mains electricity. (See Figure 6)
7. And then lift the light and clip it into the installed mounting bracket (See Figure 7)
8. After the installation, turn the mains supply on

Surface Installation (Continuation)

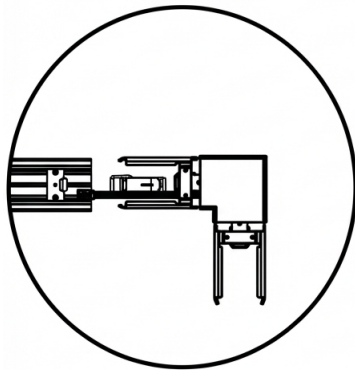
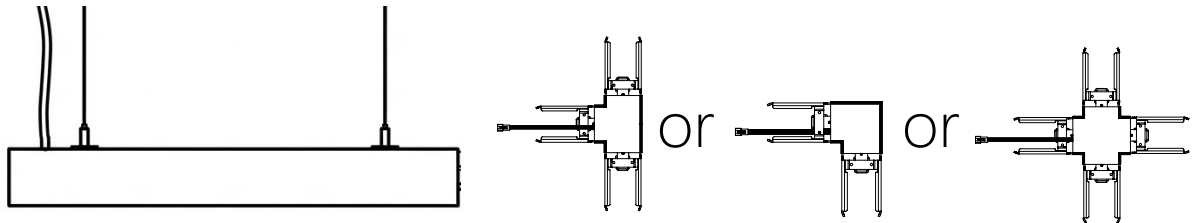


T, L & '+' Joint Installation

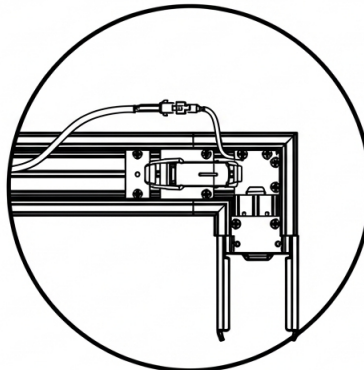
1. Before installation isolate the mains supply
2. Install the linear section according to one of the methods above. Remove the end cover during installation (See Figure 2)
3. Follow steps 1,2 and 3 as per below diagrams (See Figure 3)
4. Put cover plate on
5. After the installation, turn the mains supply on



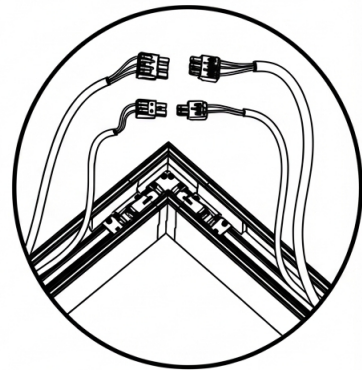
3



1. Connect the L/T/+ corners into the linear light and use the buckle to tighten the linear light with the corner.

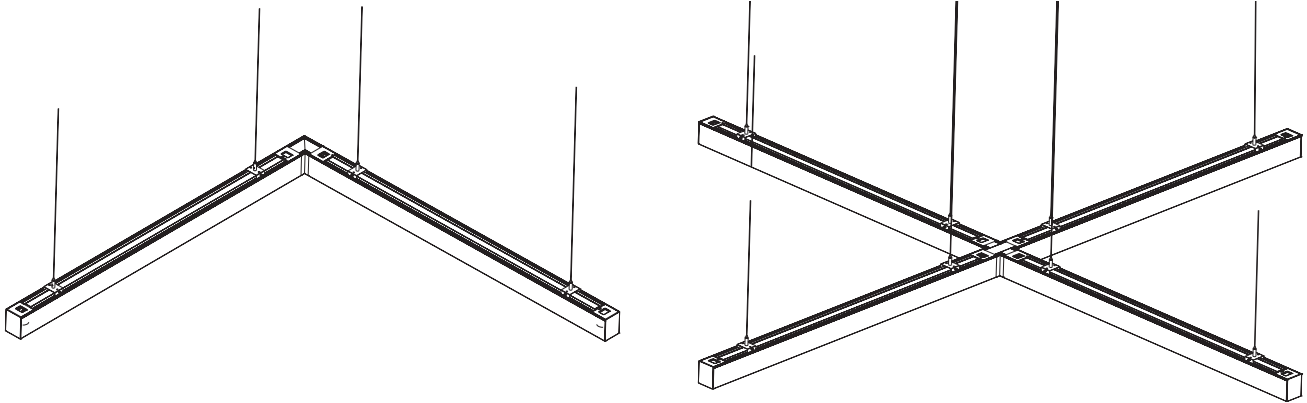


2. Connect the DC fast connector of the corner with the fast connector of the linear light



3. Connect the AC splicing male and female connectors of two linear lights

4



Warranty

This product is guaranteed for a period of 5 years from the date of purchase. The warranty is invalid in the case of improper use, tampering, removal of the Q.C. date label, installation in an improper working environment or installation not according to the current edition of the I.E.E. Wiring Regulations (BS7671). The warranty is also invalidated if the luminaire has been insulation tested. Should this product fail during the warranty period it will be replaced free of charge, subject to correct installation and return of the faulty unit. We do not accept responsibility for any installation costs associated with the replacement of this product. Your statutory rights are not affected. We reserve the right to alter specifications without prior notice.

Maintenance

- Contact Red Arrow for details of replacements.
- When this fitting comes to the end of its life or you choose to replace it, please do not dispose of it with your normal waste. Please recycle where the facilities exist, check with your local authority for suitable options.

SURFACEANDSUSPENDE/LAS-CONV1